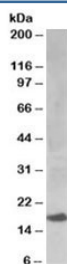


## UBE2I Antibody (R35903)

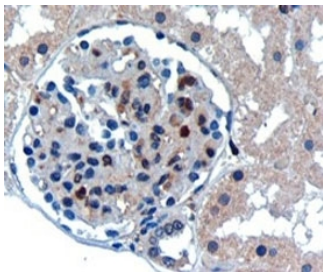
Catalog No.	Formulation	Size
R35903-100UG	0.5 mg/ml in 1X TBS, pH7.3, with 0.5% BSA (US sourced) and 0.02% sodium azide	100 ug

[Bulk quote request](#)

Availability	1-3 business days
Species Reactivity	Human, Mouse, Rat
Predicted Reactivity	Dog
Format	Antigen affinity purified
Host	Goat
Clonality	Polyclonal (goat origin)
Isotype	Goat Ig
Purity	Antigen affinity
Gene ID	7329
Applications	Western Blot : 0.1-0.3ug/ml Immunohistochemistry (FFPE) : 1-2ug/ml Immunocytochemistry : suitable ELISA (peptide) LOD : 1:64000
Limitations	This UBE2I antibody is available for research use only.



Western blot testing of human kidney lysate with UBE2I antibody at 0.1ug/ml.  
Predicted/observed molecular weight: ~17kDa.



IHC staining of FFPE human kidney with UBE2I antibody at 0.3ug/ml. HIER: microwaved with pH9 Tris/EDTA buffer, HRP-staining.

## Description

Additional name(s) for this target protein: Ubiquitin-conjugating enzyme E2I

## Application Notes

Optimal dilution of the UBE2I antibody should be determined by the researcher.

## Immunogen

Amino acids SGIALSRLAQERK were used as the immunogen for this UBE2I antibody.

## Storage

Aliquot and store the UBE2I antibody at -20oC.