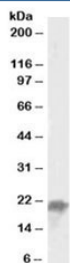


UBE2F Antibody (R34233)

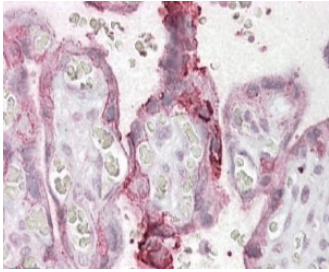
Catalog No.	Formulation	Size
R34233-100UG	0.5 mg/ml in 1X TBS, pH7.3, with 0.5% BSA (US sourced) and 0.02% sodium azide	100 ug

[Bulk quote request](#)

Availability	1-3 business days
Species Reactivity	Human, Mouse
Predicted Reactivity	Cow, Dog, Rat
Format	Antigen affinity purified
Host	Goat
Clonality	Polyclonal (goat origin)
Isotype	Goat Ig
Purity	Antigen affinity
Gene ID	140739
Applications	Western Blot : 0.05-0.2ug/ml Immunohistochemistry (FFPE) : 2.5-5ug/ml ELISA (peptide) LOD : 1:32000
Limitations	This UBE2F antibody is available for research use only.



Western blot testing of mouse liver lysate with UBE2F antibody at 0.05ug/ml. Predicted molecular weight: ~21kDa.



IHC testing of FFPE human placenta with UBE2F antibody at 2.5ug/ml shows membrane staining in trophoblasts.

Description

Additional name(s) for this target protein: Ubiquitin-conjugating enzyme E2F

Application Notes

Optimal dilution of the UBE2F antibody should be determined by the researcher.

Immunogen

Amino acids HLRDKEDFRNKVDD were used as the immunogen for this UBE2F antibody.

Storage

Aliquot and store the UBE2F antibody at -20oC.