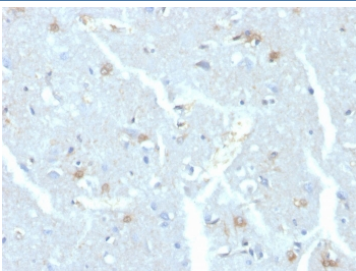


## UBE2C Antibody / UBCH10 [clone CPTC-UBE2C-1] (V8406)

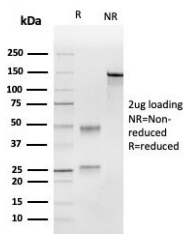
Catalog No.	Formulation	Size
V8406-100UG	0.2 mg/ml in 1X PBS with 0.1 mg/ml BSA (US sourced) and 0.05% sodium azide	100 ug
V8406-20UG	0.2 mg/ml in 1X PBS with 0.1 mg/ml BSA (US sourced) and 0.05% sodium azide	20 ug
V8406SAF-100UG	1 mg/ml in 1X PBS; BSA free, sodium azide free	100 ug

### Bulk quote request

<b>Availability</b>	1-3 business days
<b>Species Reactivity</b>	Human
<b>Format</b>	Purified
<b>Host</b>	Mouse
<b>Clonality</b>	Monoclonal (mouse origin)
<b>Isotype</b>	Mouse IgG2b, kappa
<b>Clone Name</b>	CPTC-UBE2C-1
<b>Purity</b>	Protein G affinity chromatography
<b>UniProt</b>	O00762
<b>Localization</b>	Cytoplasm
<b>Applications</b>	ELISA : order Ab without BSA for coating Immunohistochemistry (FFPE) : 1-2ug/ml for 30 minutes at RT
<b>Limitations</b>	This UBE2C antibody is available for research use only.



IHC staining of FFPE human brain with UBE2C antibody. HIER: boil tissue sections in pH 9 10mM Tris with 1mM EDTA for 20 min and allow to cool before testing.



SDS-PAGE analysis of purified, BSA-free UBE2C antibody as confirmation of integrity and purity.

## Description

The ubiquitin (Ub) pathway involves three sequential enzymatic steps that facilitate the conjugation of Ub and Ub-like molecules to specific protein substrates. The first step requires the ATP-dependent activation of the Ub C-terminus and the assembly of multi-Ub chains by the Ub-activating enzyme known as the E1 component. The Ub chain is then conjugated to the Ubconjugating enzyme (E2) to generate an intermediate Ub-E2 complex. The Ub-ligase (E3) then catalyzes the transfer of Ub from E2 to the appropriate protein substrate. UBE2C, also designated UBCH10 in human, is an E2 ubiquitin conjugating enzyme for the anaphase promoting complex (APC), which coordinates mitosis and G1 by sequentially promoting the degradation of key cell-cycle regulators. UBE2C is overexpressed in many different types of cancers and may be a potential therapeutic target.

## Application Notes

Optimal dilution of the UBE2C antibody should be determined by the researcher.

## Immunogen

Recombinant human full-length protein was used as the immunogen for the UBE2C antibody.

## Storage

Store the UBE2C antibody at 2-8oC (with azide) or aliquot and store at -20oC or colder (without azide).