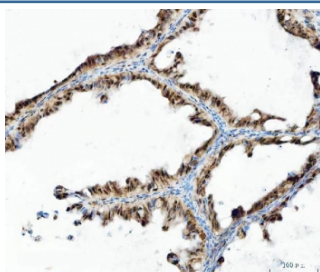


UBA6 Antibody / UBE1L2 (RQ7439)

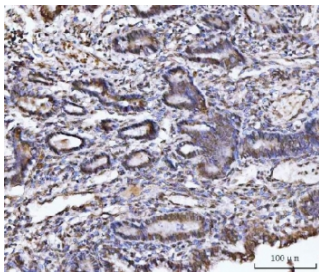
Catalog No.	Formulation	Size
RQ7439	0.5mg/ml if reconstituted with 0.2ml sterile DI water	100 ug

Bulk quote request

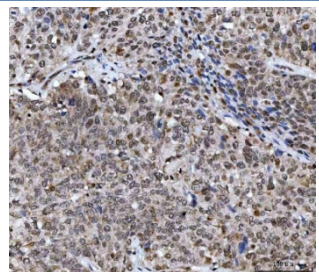
Availability	1-3 business days
Species Reactivity	Human, Monkey, Mouse, Rat
Format	Antigen affinity purified
Clonality	Polyclonal (rabbit origin)
Isotype	Rabbit IgG
Purity	Antigen affinity purified
Buffer	Lyophilized from 1X PBS with 2% Trehalose
UniProt	A0AVT1
Localization	Cytoplasmic
Applications	Western Blot : 0.5-1ug/ml Immunohistochemistry (FFPE) : 2-5ug/ml Flow Cytometry : 1-3ug/million cells Direct ELISA : 0.1-0.5ug/ml
Limitations	This UBA6 antibody is available for research use only.



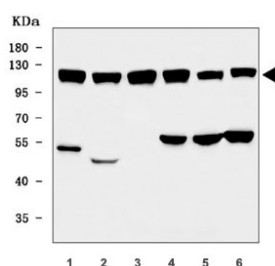
IHC staining of FFPE human ovarian cancer tissue with UBA6 antibody. HIER: boil tissue sections in pH8 EDTA for 20 min and allow to cool before testing.



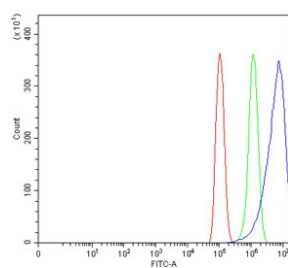
IHC staining of FFPE human cervical cancer tissue with UBA6 antibody. HIER: boil tissue sections in pH8 EDTA for 20 min and allow to cool before testing.



IHC staining of FFPE human lung squamous cell carcinoma tissue with UBA6 antibody. HIER: boil tissue sections in pH8 EDTA for 20 min and allow to cool before testing.



Western blot testing of 1) human MOLT-4, 2) human MCF7, 3) monkey COS-7, 4) rat testis, 5) rat C6 and 6) mouse NIH 3T3 cell lysate with UBA6 antibody. Predicted molecular weight ~118 kDa with isoforms of ~66 kDa, ~43 kDa and ~38 kDa.



Flow cytometry testing of human PC-3 cells with UBA6 antibody at 1ug/million cells (blocked with goat sera); Red=cells alone, Green=isotype control, Blue= UBA6 antibody.

Description

Modification of proteins with ubiquitin (UBB; MIM 191339) or ubiquitin-like proteins controls many signaling networks and requires a ubiquitin-activating enzyme (E1), a ubiquitin conjugating enzyme (E2), and a ubiquitin protein ligase (E3). UBA6/UBE1L2 is an E1 enzyme that initiates the activation and conjugation of ubiquitin-like proteins.

Application Notes

Optimal dilution of the UBA6 antibody should be determined by the researcher.

Immunogen

E. coli-derived recombinant human protein (amino acids I85-D1033) was used as the immunogen for the UBA6 antibody.

Storage

After reconstitution, the UBA6 antibody can be stored for up to one month at 4oC. For long-term, aliquot and store at -20oC. Avoid repeated freezing and thawing.

