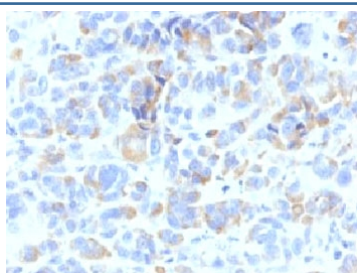


## TYRP1 Antibody / TRP1 / Tyrosinase-Related Protein-1 Antibody [clone TYRP1/807] (V2916)

Catalog No.	Formulation	Size
V2916-100UG	0.2 mg/ml in 1X PBS with 0.1 mg/ml BSA (US sourced) and 0.05% sodium azide	100 ug
V2916-20UG	0.2 mg/ml in 1X PBS with 0.1 mg/ml BSA (US sourced) and 0.05% sodium azide	20 ug
V2916SAF-100UG	1 mg/ml in 1X PBS; BSA free, sodium azide free	100 ug
V2916IHC-7ML	Prediluted in 1X PBS with 0.1 mg/ml BSA (US sourced) and 0.05% sodium azide; *For IHC use only*	7 ml

### Bulk quote request

Availability	1-3 business days
Species Reactivity	Human
Format	Purified
Host	Mouse
Clonality	Monoclonal (mouse origin)
Isotype	Mouse IgG2a, kappa
Clone Name	TYRP1/807
Purity	Protein G affinity chromatography
UniProt	P17643
Localization	Cytoplasmic
Applications	Immunohistochemistry (FFPE) : 3-6ug/ml for 30 min at RT
Limitations	This TYRP1 antibody is available for research use only.



IHC: Formalin-fixed, paraffin-embedded human melanoma stained with TYRP1 antibody (clone TYRP1/807). Required HIER: boil tissue sections in 10mM Tris with 1mM EDTA, pH 9, for 10-20 min followed by cooling at RT for 20 min.

## Description

It reacts with a 75kDa melanocyte-specific gene product, identified as Tyrosinase-related protein-1 (TRP-1). It is involved in melanin synthesis. TRP1 is present on the melanosomal membranes of melanoma, normal melanocytes and nevi. Recent evidence suggests that TRP-1 is involved in maintaining stability of tyrosinase protein and modulating its catalytic activity. TRP-1 is also involved in maintenance of melanosome ultrastructure and affects melanocyte proliferation and cell death.

## Application Notes

Optimal dilution of the TYRP1 antibody should be determined by the researcher.

1. The prediluted format is supplied in a dropper bottle and is optimized for use in IHC. After epitope retrieval step (if required), drip mAb solution onto the tissue section and incubate at RT for 30 min.

## Immunogen

Recombinant full-length human protein was used as the immunogen for the TYRP1 antibody.

## Storage

Store the TYRP1 antibody at 2-8oC (with azide) or aliquot and store at -20oC or colder (without azide).