

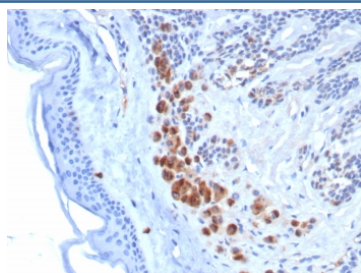
Tyrosinase-Related Protein-1 Antibody / TYRP1 [clone TYRP1/8313R] (V5282)

Catalog No.	Formulation	Size
V5282-100UG	0.2 mg/ml in 1X PBS with 0.1 mg/ml BSA (US sourced), 0.05% sodium azide	100 ug
V5282-20UG	0.2 mg/ml in 1X PBS with 0.1 mg/ml BSA (US sourced), 0.05% sodium azide	20 ug
V5282SAF-100UG	1 mg/ml in 1X PBS; BSA free, sodium azide free	100 ug

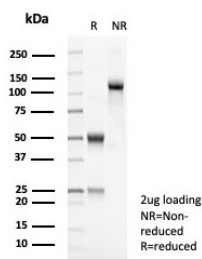
Recombinant **RABBIT MONOCLONAL**

[Bulk quote request](#)

Availability	1-3 business days
Species Reactivity	Human
Format	Purified
Host	Rabbit
Clonality	Recombinant Rabbit Monoclonal
Isotype	Rabbit IgG, kappa
Clone Name	TYRP1/8313R
Purity	Protein A affinity
UniProt	P17643
Localization	Cytoplasm
Applications	Immunohistochemistry (FFPE) : 1-2ug/ml for 30 min at RT
Limitations	This Tyrosinase-Related Protein-1 antibody is available for research use only.



IHC staining of FFPE human melanoma tissue with Tyrosinase-Related Protein-1 antibody (clone TYRP1/8313R). HIER: boil tissue sections in pH 9 10mM Tris with 1mM EDTA for 20 min and allow to cool before testing.



SDS-PAGE analysis of purified, BSA-free Tyrosinase-Related Protein-1 antibody (clone TYRP1/8313R) as confirmation of integrity and purity.

Description

It reacts with a 75kDa melanocyte-specific gene product, identified as Tyrosinase-related protein-1 (TRP-1). It is involved in melanin synthesis. TRP1 is present on the melanosomal membranes of melanoma, normal melanocytes and nevi. Recent evidence suggests that TRP-1 is involved in maintaining stability of tyrosinase protein and modulating its catalytic activity. TRP-1 is also involved in maintenance of melanosome ultrastructure and affects melanocyte proliferation and cell death.

Application Notes

Optimal dilution of the Tyrosinase-Related Protein-1 antibody should be determined by the researcher.

Immunogen

A recombinant partial protein sequence (within amino acids 200-400) from the human protein was used as the immunogen for the Tyrosinase-Related Protein-1 antibody.

Storage

Aliquot the Tyrosinase-Related Protein-1 antibody and store frozen at -20oC or colder. Avoid repeated freeze-thaw cycles.