

Tyrosinase Antibody [clone T311] (V2290)

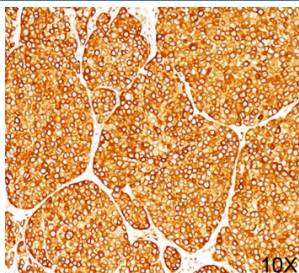
Catalog No.	Formulation	Size
V2290-100UG	0.2 mg/ml in 1X PBS with 0.1 mg/ml BSA (US sourced) and 0.05% sodium azide	100 ug
V2290-20UG	0.2 mg/ml in 1X PBS with 0.1 mg/ml BSA (US sourced) and 0.05% sodium azide	20 ug
V2290SAF-100UG	1 mg/ml in 1X PBS; BSA free, sodium azide free	100 ug
V2290IHC-7ML	Prediluted in 1X PBS with 0.1 mg/ml BSA (US sourced) and 0.05% sodium azide; *For IHC use only*	7 ml



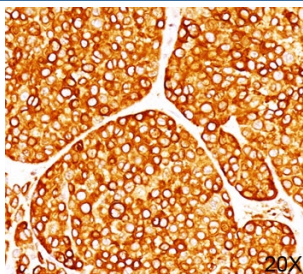
Citations (12)

[Bulk quote request](#)

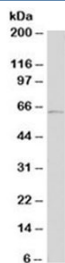
Species Reactivity	Human
Format	Purified
Clonality	Monoclonal (mouse origin)
Isotype	Mouse IgG2a, kappa
Clone Name	T311
Purity	Protein G affinity chromatography
Gene ID	7299
Localization	Cytoplasmic
Applications	Immunohistochemistry (FFPE) : 1-2ug/ml for 30 min at RT
Limitations	This Tyrosinase antibody is available for research use only.



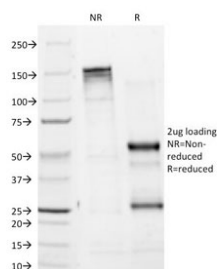
IHC staining of melanoma tissue (10X) with Tyrosinase antibody (T311).



IHC staining of melanoma tissue (20X) with Tyrosinase antibody (T311).



Western blot testing of human A375 cell lysate with Tyrosinase antibody (clone T311).
Expected molecular weight: ~60-84kDa depending on glycosylation level.



SDS-PAGE Analysis of Purified, BSA-Free Tyrosinase Antibody (clone T311).
Confirmation of Integrity and Purity of the Antibody.

Description

Tyrosinase is a copper-containing metalloglycoprotein that catalyzes several steps in the melanin pigment biosynthetic pathway; the hydroxylation of tyrosine to L-3,4-dihydroxy-phenylalanine (dopa), and the subsequent oxidation of dopa to dopaquinone. Mutations of the gene occur in various forms of albinism. Tyrosinase is one of the targets for cytotoxic T-cell recognition in melanoma patients.

Application Notes

The concentration stated for each application is a general starting point. Variations in protocols, secondaries and substrates may require the antibody to be titrated up or down for optimal performance.

1. Staining of formalin-fixed tissues requires boiling tissue sections in pH 9 10mM Tris with 1mM EDTA for 10-20 min followed by cooling at RT for 20 minutes.
2. The prediluted format is supplied in a dropper bottle and is optimized for use in IHC. After epitope retrieval step (if required), drip mAb solution onto the tissue section and incubate at RT for 30 min.

Immunogen

Recombinant Tyrosinase protein was used as the immunogen for this antibody. Subsequent testing has localized the epitope to within amino acids 233-247 (IPYWDWRDAEKCDIC) (see Citation 12).

Storage

Store the Tyrosinase antibody at 2-8°C (with azide) or aliquot and store at -20°C or colder (without azide).

Alternate Names

ATN, CMM8, LB24-AB, Monophenol monooxygenase, OCA1, OCA1A, Oculocutaneous albinism IA, SHEP3, SK29-AB, Tumor rejection antigen AB, TYR

References (1)