

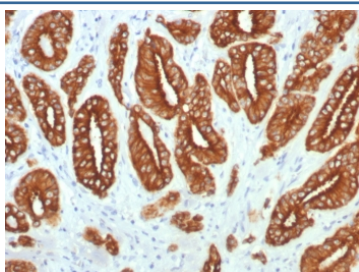
Type I Cytokeratin Antibody / Acidic / LMW [clone KRTL/7784R] (V4498)

Catalog No.	Formulation	Size
V4498-100UG	0.2 mg/ml in 1X PBS with 0.1 mg/ml BSA (US sourced), 0.05% sodium azide	100 ug
V4498-20UG	0.2 mg/ml in 1X PBS with 0.1 mg/ml BSA (US sourced), 0.05% sodium azide	20 ug
V4498SAF-100UG	1 mg/ml in 1X PBS; BSA free, sodium azide free	100 ug

Recombinant **RABBIT MONOCLONAL**

[Bulk quote request](#)

Availability	1-3 business days
Species Reactivity	Human
Format	Purified
Clonality	Recombinant Rabbit Monoclonal
Isotype	Rabbit IgG
Clone Name	KRTL/7784R
Purity	Protein A/G affinity
UniProt	Q7Z794
Localization	Cytoplasm
Applications	Immunohistochemistry (FFPE) : 1-2ug/ml for 30 minutes at RT
Limitations	This Type I Cytokeratin antibody is available for research use only.



IHC staining of FFPE human prostate carcinoma tissue with Type I Cytokeratin antibody (clone KRTL/7784R). HIER: boil tissue sections in pH 9 10mM Tris with 1mM EDTA for 20 min and allow to cool before testing.

Description

This antibody can detect high molecular weight CK10, CK14, CK15 and CK16 and low molecular weight CK19. It usually used in a cytokeratin cocktail with type II cytokeratin antibody.

The keratins are the typical intermediate filament proteins of epithelia, showing an outstanding degree of molecular

diversity. Heteropolymeric filaments are formed by pairing of type I and type II molecules. In humans 54 functional keratin genes exist. They are expressed in highly specific patterns related to the epithelial type and stage of cellular differentiation.

Application Notes

Optimal dilution of the Type I Cytokeratin antibody should be determined by the researcher.

Immunogen

A synthetic peptide corresponding to human Type I Cytokeratin proteins was used as the immunogen for the Type I Cytokeratin antibody.

Storage

Aliquot the Type I Cytokeratin antibody and store frozen at -20oC or colder. Avoid repeated freeze-thaw cycles.