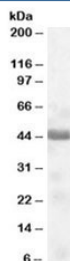


## TUSC4 Antibody (R35526)

Catalog No.	Formulation	Size
R35526-100UG	0.5 mg/ml in 1X TBS, pH7.3, with 0.5% BSA (US sourced) and 0.02% sodium azide	100 ug

[Bulk quote request](#)

Availability	1-3 business days
Species Reactivity	Human
Predicted Reactivity	Mouse
Format	Antigen affinity purified
Host	Goat
Clonality	Polyclonal (goat origin)
Isotype	Goat Ig
Purity	Antigen affinity
Gene ID	10641
Applications	Western Blot : 0.1-0.3ug/ml ELISA (peptide) LOD : 1:32000
Limitations	This TUSC4 antibody is available for research use only.



Western blot testing of human muscle lysate with TUSC4 antibody at 0.1ug/ml. Predicted molecular weight: ~44kDa.

### Description

Additional name(s) for this target protein: Tumor suppressor candidate 4, NPRL2

### Application Notes

Optimal dilution of the TUSC4 antibody should be determined by the researcher.

## Immunogen

Amino acids QYSNVYCPTPKV were used as the immunogen for this TUSC4 antibody.

## Storage

Aliquot and store the TUSC4 antibody at -20oC.