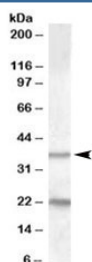


TUSC3 Antibody (R35124)

Catalog No.	Formulation	Size
R35124-100UG	0.5 mg/ml in 1X TBS, pH7.3, with 0.5% BSA (US sourced) and 0.02% sodium azide	100 ug

[Bulk quote request](#)

Availability	1-3 business days
Species Reactivity	Human
Predicted Reactivity	Cow, Mouse, Rat
Format	Antigen affinity purified
Clonality	Polyclonal (goat origin)
Isotype	Goat Ig
Purity	Antigen affinity
Gene ID	7991
Applications	Western Blot : 1-3ug/ml ELISA (peptide) LOD : 1:1000
Limitations	This TUSC3 antibody is available for research use only.



Western blot testing of human liver lysate with TUSC3 antibody at 1ug/ml. The expected ~37kDa band and the additional ~22kDa band are blocked by the immunizing peptide.

Description

Additional name(s) for this target protein: Tumor suppressor candidate 3

Application Notes

Optimal dilution of the TUSC3 antibody should be determined by the researcher.

Immunogen

Amino acids PQRQCSVCRQAN were used as the immunogen for this TUSC3 antibody.

Storage

Aliquot and store the TUSC3 antibody at -20oC.