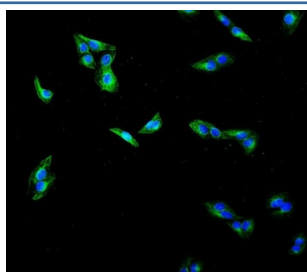


Tubulin Beta Antibody [clone 5E4.] (RQ6081)

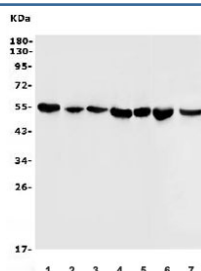
Catalog No.	Formulation	Size
RQ6081	0.5mg/ml if reconstituted with 0.2ml sterile DI water	100 ug

Bulk quote request

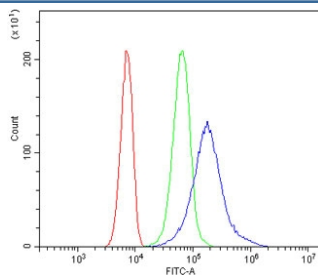
Availability	1-3 business days
Species Reactivity	Human, Mouse, Rat
Format	Purified
Clonality	Monoclonal (mouse origin)
Isotype	Mouse IgG1
Clone Name	5E4.
Purity	Affinity purified
Buffer	Lyophilized from 1X PBS with 2% Trehalose and 0.025% sodium azide
UniProt	P07437
Applications	Western Blot : 0.5-1ug/ml Immunofluorescence : 2-4ug/ml Flow Cytometry : 1-3ug/million cells
Limitations	This Tubulin Beta antibody is available for research use only.



Immunofluorescent staining of FFPE human A431 cells with Tubulin Beta antibody (green) and DAPI nuclear stain (blue). HIER: steam section in pH6 citrate buffer for 20 min.



Western blot testing of human 1) HEK293, 2) HeLa, 3) HepG2, 4) HL-60, 5) Raji, 6) rat brain and 7) mouse brain lysate with Tubulin Beta antibody. Predicted molecular weight: ~50 kDa.



Flow cytometry testing of human SiHa cells with Tubulin Beta antibody at 1ug/million cells (blocked with goat sera); Red=cells alone, Green=isotype control, Blue= Tubulin Beta antibody.

Description

Tubulin beta chain is a protein that in humans is encoded by the TUBB gene. This gene encodes a beta tubulin protein. This protein forms a dimer with alpha tubulin and acts as a structural component of microtubules. Mutations in this gene cause cortical dysplasia, complex, with other brain malformations 6. Alternative splicing results in multiple splice variants. There are multiple pseudogenes for this gene on chromosomes 1, 6, 7, 8, 9, and 13.

Application Notes

Optimal dilution of the Tubulin Beta antibody should be determined by the researcher.

Immunogen

Amino acids EQFTAMFRRKAFLHWYTGEGMDEMEFTEAE from the human protein were used as the immunogen for the Tubulin Beta antibody.

Storage

After reconstitution, the Tubulin Beta antibody can be stored for up to one month at 4oC. For long-term, aliquot and store at -20oC. Avoid repeated freezing and thawing.