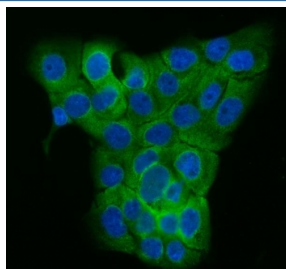


## TUBGCP2 Antibody / GCP2 (RQ6813)

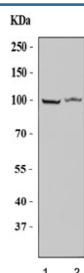
Catalog No.	Formulation	Size
RQ6813	0.5mg/ml if reconstituted with 0.2ml sterile DI water	100 ug

**Bulk quote request**

<b>Availability</b>	1-3 business days
<b>Species Reactivity</b>	Human
<b>Format</b>	Antigen affinity purified
<b>Clonality</b>	Polyclonal (rabbit origin)
<b>Isotype</b>	Rabbit IgG
<b>Purity</b>	Antigen affinity purified
<b>Buffer</b>	Lyophilized from 1X PBS with 2% Trehalose
<b>UniProt</b>	Q9BSJ2
<b>Localization</b>	Cytoplasmic
<b>Applications</b>	Western Blot : 1-2ug/ml Immunofluorescence (FFPE) : 5ug/ml Direct ELISA : 0.1-0.5ug/ml
<b>Limitations</b>	This TUBGCP2 antibody is available for research use only.



Immunofluorescent staining of FFPE human A431 cells with TUBGCP2 antibody (green) and DAPI nuclear stain (blue). HIER: steam section in pH6 citrate buffer for 20 min.



Western blot testing of human 1) 293T and 2) U-87 MG cell lysate with TUBGCP2 antibody. Predicted molecular weight ~103 kDa.

## Description

Gamma-tubulin complex component 2 is a protein that in humans is encoded by the TUBGCP2 gene. It is part of the gamma tubulin complex, which required formicrotubule nucleation at the centrosome. Gamma-tubulin complex is necessary for microtubule nucleation at the centrosome. Gamma-tubulin complex is composed of gamma-tubulin, TUBGCP2, TUBGCP3, TUBGCP4, TUBGCP5 and TUBGCP6.

## Application Notes

Optimal dilution of the TUBGCP2 antibody should be determined by the researcher.

## Immunogen

Recombinant human protein (amino acids Q213-R888) was used as the immunogen for the TUBGCP2 antibody.

## Storage

After reconstitution, the TUBGCP2 antibody can be stored for up to one month at 4oC. For long-term, aliquot and store at -20oC. Avoid repeated freezing and thawing.