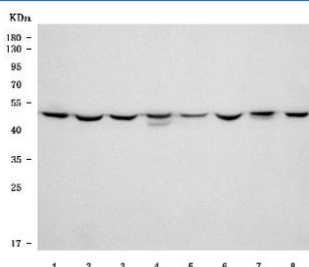


TUBG1/2 Antibody / Gamma Tubulin (RQ7672)

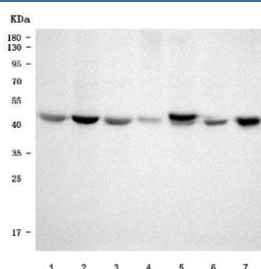
Catalog No.	Formulation	Size
RQ7672	0.5mg/ml if reconstituted with 0.2ml sterile DI water	100 ug

Bulk quote request

Availability	1-3 business days
Species Reactivity	Human, Mouse, Rat
Format	Antigen affinity purified
Host	Rabbit
Clonality	Polyclonal (rabbit origin)
Isotype	Rabbit IgG
Purity	Antigen affinity purified
Buffer	Lyophilized from 1X PBS with 2% Trehalose
UniProt	P23258, Q9NRH3
Applications	Western Blot : 0.5-1ug/ml Direct ELISA : 0.1-0.5ug/ml
Limitations	This TUBG1/2 antibody is available for research use only.



Western blot testing of 1) rat testis, 2) rat brain, 3) rat C6, 4) rat PC-12, 5) mouse testis, 6) mouse brain, 7) mouse Neuro-2a and 8) mouse SP2/0 cell lysate with TUBG1/2 antibody. Predicted molecular weight ~51 kDa.



Western blot testing of human 1) MCF7, 2) HepG2, 3) A549, 4) T-47D, 5) U-251, 6) Caco-2 and 7) HaCaT cell lysate with TUBG1/2 antibody. Predicted molecular weight ~51 kDa.

Description

Tubulin, gamma 1/2 is a protein in humans that is encoded by the TUBG1/2 gene. This gene encodes a member of the tubulin superfamily. The encoded protein localizes to the centrosome where it binds to microtubules as part of a complex referred to as the gamma-tubulin ring complex. The protein mediates microtubule nucleation and is required for microtubule formation and progression of the cell cycle. A pseudogene of this gene is found on chromosome 7.

Application Notes

Optimal dilution of the TUBG1/2 antibody should be determined by the researcher.

Immunogen

E. coli-derived recombinant human protein (amino acids Q167-Q394) was used as the immunogen for the TUBG1/2 antibody.

Storage

After reconstitution, the TUBG1/2 antibody can be stored for up to one month at 4oC. For long-term, aliquot and store at -20oC. Avoid repeated freezing and thawing.