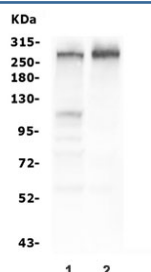


Tuberin Antibody [clone 6I3] (RQ5616)

Catalog No.	Formulation	Size
RQ5616	0.5mg/ml if reconstituted with 0.2ml sterile DI water	100 ug

Bulk quote request

Availability	1-3 business days
Species Reactivity	Human
Format	Antigen affinity purified
Host	Mouse
Clonality	Monoclonal (mouse origin)
Isotype	Mouse IgG2b
Clone Name	6I3
Purity	Affinity purified
Buffer	Lyophilized from 1X PBS with 2% Trehalose and 0.025% sodium azide
UniProt	P49815
Applications	Western Blot : 0.5-1ug/ml
Limitations	This Tuberin antibody is available for research use only.



Western blot testing of human 1) HEK293 and 2) PC-3 cell lysate with Tuberin antibody.
Expected molecular weight: 200~220 kDa.

Description

Tuberous sclerosis 2 protein, also known as TSC2 or Tuberin is a protein that is in humans. The chromosomal location of this gene is 16p13.3. Mutations in this gene lead to tuberous sclerosis complex. Its gene product is believed to be a tumor suppressor and is able to stimulate specific GTPases. The protein associates with hamartin in a cytosolic complex, possibly acting as a chaperone for hamartin. This gene involved in microtubule-mediated protein transport, but this seems to be due to unregulated mTOR signaling. It stimulates weakly the intrinsic GTPase activity of the Ras-related proteins

RAP1A and RAB5 in vitro.

Application Notes

Optimal dilution of the Tuberin antibody should be determined by the researcher.

Immunogen

A human recombinant protein (amino acids H1611-V1807) was used as the immunogen for the Tuberin antibody.

Storage

After reconstitution, the Tuberin antibody can be stored for up to one month at 4°C. For long-term, aliquot and store at -20°C. Avoid repeated freezing and thawing.