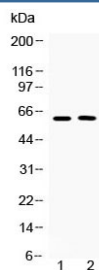


Tubby Antibody (R32733)

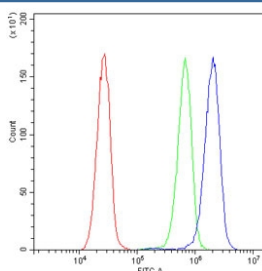
Catalog No.	Formulation	Size
R32733	0.5mg/ml if reconstituted with 0.2ml sterile DI water	100 ug

Bulk quote request

Availability	1-3 business days
Species Reactivity	Human
Format	Antigen affinity purified
Clonality	Polyclonal (rabbit origin)
Isotype	Rabbit IgG
Purity	Antigen affinity
Buffer	Lyophilized from 1X PBS with 2.5% BSA, 0.025% sodium azide
UniProt	P50607
Applications	Western Blot : 0.5-1ug/ml Flow Cytometry : 1-3ug/10 ⁶ cells
Limitations	This Tubby antibody is available for research use only.



Western blot testing of human 1) COLO320 and 2) MCF7 cell lysate with Tubby antibody at 0.5ug/ml. Predicted molecular weight ~56/62 kDa (isoforms 1/2).



Flow cytometry testing of human HeLa cells with Tubby antibody at 1ug/10⁶ cells (blocked with goat sera); Red=cells alone, Green=isotype control, Blue= Tubby antibody.

Description

Tubby protein homolog is a protein that in humans is encoded by the TUB gene. This gene encodes a member of the Tubby family of bipartite transcription factors. The encoded protein may play a role in obesity and sensorineural degradation. The crystal structure has been determined for a similar protein in mouse, and it functions as a membrane-bound transcription regulator that translocates to the nucleus in response to phosphoinositide hydrolysis. Two transcript variants encoding distinct isoforms have been identified for this gene.

Application Notes

Optimal dilution of the Tubby antibody should be determined by the researcher.

Immunogen

Amino acids 395-429 (VHERVSIRPRNEHETLLARWQNKNTESIIEELQNKT) from the human protein were used as the immunogen for the Tubby antibody.

Storage

After reconstitution, the Tubby antibody can be stored for up to one month at 4°C. For long-term, aliquot and store at -20°C. Avoid repeated freezing and thawing.