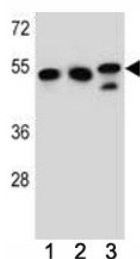


TUBB6 Antibody (Tubulin beta 6) (F41790)

Catalog No.	Formulation	Size
F41790-0.4ML	In 1X PBS, pH 7.4, with 0.09% sodium azide	0.4 ml
F41790-0.08ML	In 1X PBS, pH 7.4, with 0.09% sodium azide	0.08 ml

[Bulk quote request](#)

Availability	1-3 business days
Species Reactivity	Human
Predicted Reactivity	Bovine, Mouse, Primate
Format	Antigen affinity purified
Host	Rabbit
Clonality	Polyclonal (rabbit origin)
Isotype	Rabbit Ig
Purity	Antigen affinity
UniProt	Q9BUF5
Applications	Western Blot : 1:1000
Limitations	This TUBB6 antibody is available for research use only.



TUBB6 antibody western blot analysis in K562, HeLa, MDA-MB231 lysate.

Description

Tubulin is the major constituent of microtubules. It binds two moles of GTP, one at an exchangeable site on the beta chain and one at a non-exchangeable site on the alpha-chain (By similarity).

Application Notes

Titration of the TUBB6 antibody may be required due to differences in protocols and secondary/substrate sensitivity.

Immunogen

A portion of amino acids 139-166 from the human protein was used as the immunogen for this TUBB6 antibody.

Storage

Aliquot the TUBB6 antibody and store frozen at -20oC or colder. Avoid repeated freeze-thaw cycles.