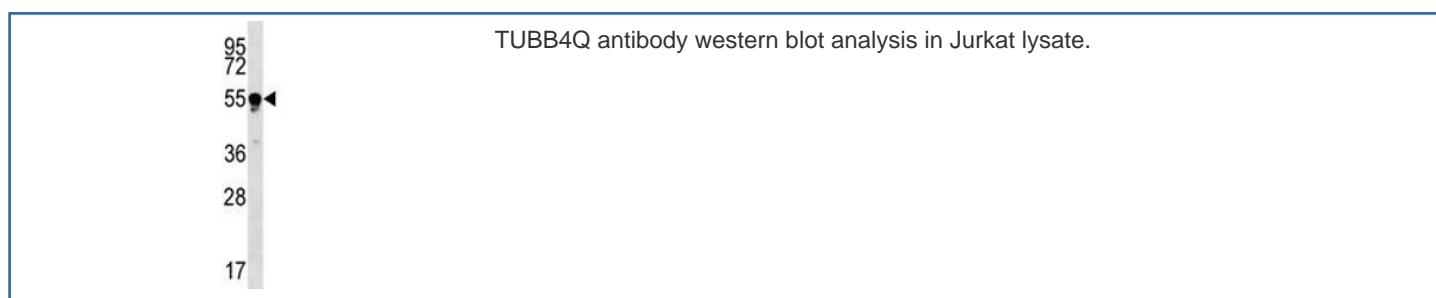


TUBB4Q Antibody (Tubulin beta 4Q) (F52213)

Catalog No.	Formulation	Size
F52213-0.4ML	In 1X PBS, pH 7.4, with 0.09% sodium azide	0.4 ml
F52213-0.08ML	In 1X PBS, pH 7.4, with 0.09% sodium azide	0.08 ml

[Bulk quote request](#)

Availability	1-3 business days
Species Reactivity	Human
Format	Antigen affinity purified
Clonality	Polyclonal (rabbit origin)
Isotype	Rabbit Ig
Purity	Antigen affinity
UniProt	Q99867
Applications	Western Blot : 1:1000
Limitations	This TUBB4Q antibody is available for research use only.



Description

Tubulin is the major constituent of microtubules. It binds two moles of GTP, one at an exchangeable site on the beta chain and one at a non-exchangeable site on the alpha-chain (By similarity).

Application Notes

Titration of the TUBB4Q antibody may be required due to differences in protocols and secondary/substrate sensitivity.

Immunogen

A portion of amino acids 64-93 from the human protein was used as the immunogen for this TUBB4Q antibody.

Storage

Aliquot the TUBB4Q antibody and store frozen at -20oC or colder. Avoid repeated freeze-thaw cycles.