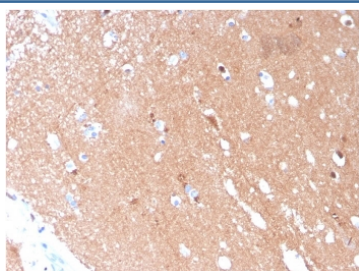


TUBB3 Antibody / Beta Tubulin [clone TUBB3/3731] (V7658)

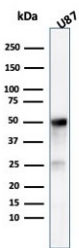
Catalog No.	Formulation	Size
V7658-100UG	0.2 mg/ml in 1X PBS with 0.1 mg/ml BSA (US sourced) and 0.05% sodium azide	100 ug
V7658-20UG	0.2 mg/ml in 1X PBS with 0.1 mg/ml BSA (US sourced) and 0.05% sodium azide	20 ug
V7658SAF-100UG	1 mg/ml in 1X PBS; BSA free, sodium azide free	100 ug

[Bulk quote request](#)

Availability	1-3 business days
Species Reactivity	Human
Format	Purified
Host	Mouse
Clonality	Monoclonal (mouse origin)
Isotype	Mouse IgG1, kappa
Clone Name	TUBB3/3731
Purity	Protein G affinity chromatography
UniProt	Q13509
Localization	Cytoplasmic
Applications	Immunohistochemistry (FFPE) : 1-2ug/ml Western Blot : 1-2ug/ml
Limitations	This TUBB3 antibody is available for research use only.

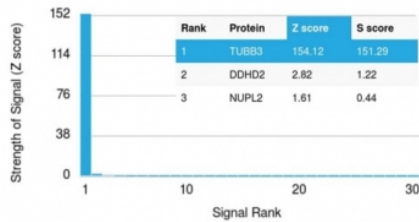


IHC staining of FFPE human brain with TUBB3 antibody (TUBB3/3731). HIER: boil tissue sections in pH 9 10mM Tris with 1mM EDTA for 10-20 min and allow to cool before testing.



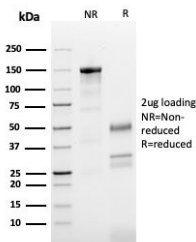
Western blot testing of human U-87 cel lysate with TUBB3 antibody (clone TUBB3/3731). Predicted molecular weight: ~50 kDa.

Human Protein Microarray Specificity Validation



Analysis of HuProt(TM) microarray containing more than 19,000 full-length human proteins using TUBB3 antibody (clone TUBB3/3731). These results demonstrate the foremost specificity of the TUBB3/3731 mAb.

Z- and S- score: The Z-score represents the strength of a signal that an antibody (in combination with a fluorescently-tagged anti-IgG secondary Ab) produces when binding to a particular protein on the HuProt(TM) array. Z-scores are described in units of standard deviations (SD's) above the mean value of all signals generated on that array. If the targets on the HuProt(TM) are arranged in descending order of the Z-score, the S-score is the difference (also in units of SD's) between the Z-scores. The S-score therefore represents the relative target specificity of an Ab to its intended target.



SDS-PAGE analysis of purified, BSA-free TUBB3 antibody (clone TUBB3/3731) as confirmation of integrity and purity.

Description

This gene encodes a class III member of the beta tubulin protein family. Beta tubulins are one of two core protein families (alpha and beta tubulins) that heterodimerize and assemble to form microtubules. This protein is primarily expressed in neurons and may be involved in neurogenesis and axon guidance and maintenance. Mutations in this gene are the cause of congenital fibrosis of the extraocular muscles type 3. In adults, tubulin beta 3 (TUBB3) is primarily expressed in neurons and is commonly used as a neuronal marker. It plays an important role in neuronal cell proliferation and differentiation.

Application Notes

Optimal dilution of the TUBB3 antibody should be determined by the researcher.

Immunogen

Amino acids 437-450 were used as the immunogen for the TUBB3 antibody.

Storage

Store the TUBB3 antibody at 2-8°C (with azide) or aliquot and store at -20°C or colder (without azide).

