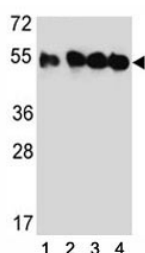


## TUBB2C Antibody / Tubulin beta 2C (F49034)

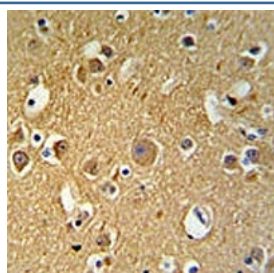
Catalog No.	Formulation	Size
F49034-0.4ML	In 1X PBS, pH 7.4, with 0.09% sodium azide	0.4 ml
F49034-0.08ML	In 1X PBS, pH 7.4, with 0.09% sodium azide	0.08 ml

**Bulk quote request**

<b>Availability</b>	1-3 business days
<b>Species Reactivity</b>	Human
<b>Predicted Reactivity</b>	Bovine, Chicken, Drosophila, Hamster, Mouse, Pig, Rat, Xenopus
<b>Format</b>	Antigen affinity purified
<b>Clonality</b>	Polyclonal (rabbit origin)
<b>Isotype</b>	Rabbit Ig
<b>Purity</b>	Antigen affinity
<b>UniProt</b>	P68371
<b>Applications</b>	Western Blot : 1:1000 IHC (Paraffin) : 1:50-1:100
<b>Limitations</b>	This TUBB2C antibody is available for research use only.



Western blot analysis of TUBB2C antibody and (1) HeLa, (2) MDA-MB435, (3) MDA-MB231, and (4) HepG2 lysate.



TUBB2C antibody IHC analysis in formalin fixed and paraffin embedded human brain tissue

## Description

TUBB2C is the major constituent of microtubules. It binds two moles of GTP, one at an exchangeable site on the beta chain and one at a non-exchangeable site on the alpha-chain.

## Application Notes

Titration of the TUBB2C antibody may be required due to differences in protocols and secondary/substrate sensitivity.

## Immunogen

A portion of amino acids 99-125 from the human protein was used as the immunogen for this TUBB2C antibody.

## Storage

Aliquot the TUBB2C antibody and store frozen at -20oC or colder. Avoid repeated freeze-thaw cycles.