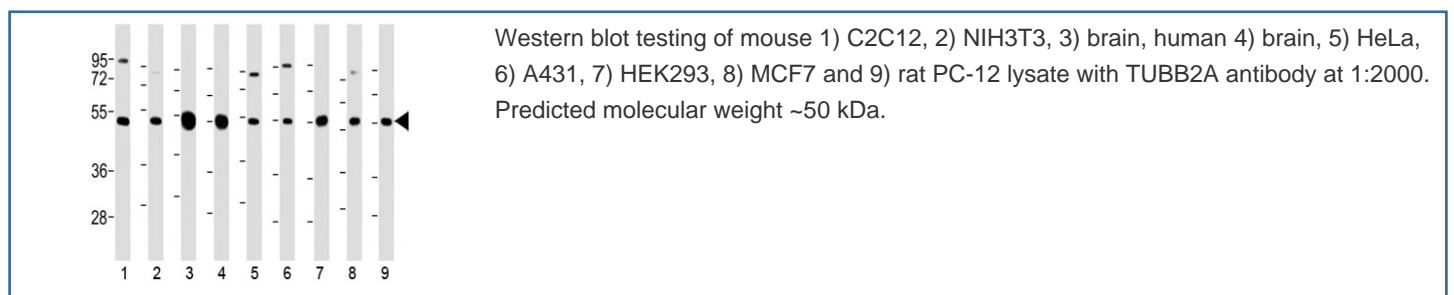


TUBB2A Antibody / Tubulin beta 2A (F54147)

Catalog No.	Formulation	Size
F54147-0.2ML	In 1X PBS, pH 7.4, with 0.09% sodium azide	0.2 ml
F54147-0.05ML	In 1X PBS, pH 7.4, with 0.09% sodium azide	0.05 ml

[Bulk quote request](#)

Availability	1-3 business days
Species Reactivity	Human, Mouse, Rat
Predicted Reactivity	Primate
Format	Antigen affinity purified
Host	Rabbit
Clonality	Polyclonal (rabbit origin)
Isotype	Rabbit Ig
Purity	Antigen affinity
UniProt	Q7TMM9
Applications	Western Blot : 1:1000-1:2000
Limitations	This TUBB2A antibody is available for research use only.



Description

Tubulin is the major constituent of microtubules. It binds two moles of GTP, one at an exchangeable site on the beta chain and one at a non-exchangeable site on the alpha chain (By similarity).

Application Notes

The stated application concentrations are suggested starting points. Titration of the TUBB2A antibody may be required

due to differences in protocols and secondary/substrate sensitivity.

Immunogen

A portion of amino acids 194-225 from mouse Tubulin beta 2A was used as the immunogen for the TUBB2A antibody.

Storage

Aliquot the TUBB2A antibody and store frozen at -20oC or colder. Avoid repeated freeze-thaw cycles.