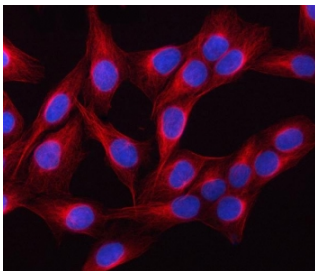


TUBB1 Antibody / Tubulin beta (RQ5777)

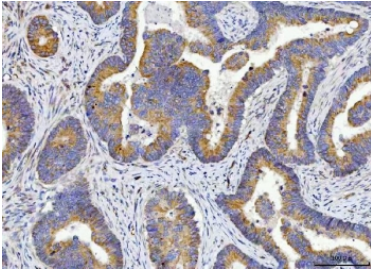
Catalog No.	Formulation	Size
RQ5777	0.5mg/ml if reconstituted with 0.2ml sterile DI water	100 ug

[Bulk quote request](#)

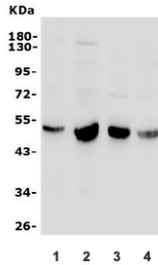
Availability	1-3 business days
Species Reactivity	Human, Mouse, Rat
Format	Antigen affinity purified
Host	Rabbit
Clonality	Polyclonal (rabbit origin)
Isotype	Rabbit IgG
Purity	Affinity purified
Buffer	Lyophilized from 1X PBS with 2% Trehalose
UniProt	Q9H4B7
Applications	Western Blot : 0.5-1ug/ml Immunofluorescence : 5ug/ml Flow Cytometry : 1-3ug/million cells Immunohistochemistry (FFPE) : 2-5ug/ml Direct ELISA : 0.1-0.5ug/ml
Limitations	This TUBB1 antibody is available for research use only.



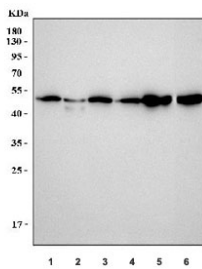
Immunofluorescent staining of FFPE human U-2 OS cells with TUBB1 antibody (red) and DAPI nuclear stain (blue). HIER: steam section in pH6 citrate buffer for 20 min.



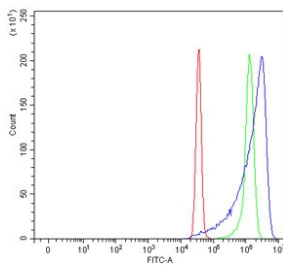
IHC staining of FFPE human rectal cancer tissue with TUBB1 antibody. HIER: boil tissue sections in pH8 EDTA for 20 min and allow to cool before testing.



Western blot testing of 1) human HeLa, 2) human ThP-1, 3) rat brain and 4) mouse brain lysate with TUBB1 antibody. Expected molecular weight: 50-55 kDa.



Western blot testing of 1) human HeLa, 2) human K562, 3) human HEL, 4) human HepG2, 5) rat brain and 6) mouse brain lysate with TUBB1 antibody. Expected molecular weight: 50-55 kDa.



Flow cytometry testing of human SiHa cells with TUBB1 antibody at 1ug/million cells (blocked with goat sera); Red=cells alone, Green=isotype control, Blue= TUBB1 antibody.

Description

TUBB1 is a gene that codes for the protein Tubulin beta-1 chain in humans. This gene encodes a member of the beta tubulin protein family. Beta tubulins are one of two core protein families (alpha and beta tubulins) that heterodimerize and assemble to form microtubules. This protein is specifically expressed in platelets and megakaryocytes and may be involved in proplatelet production and platelet release. A mutations in this gene is associated with autosomal dominant macrothrombocytopenia. Two pseudogenes of this gene are found on chromosome Y.

Application Notes

Optimal dilution of the TUBB1 antibody should be determined by the researcher.

Immunogen

Recombinant human protein (amino acids A18-D435) was used as the immunogen for the TUBB1 antibody.

Storage

After reconstitution, the TUBB1 antibody can be stored for up to one month at 4oC. For long-term, aliquot and store at -20oC. Avoid repeated freezing and thawing.

