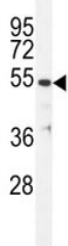


TUBB Antibody (F41687)

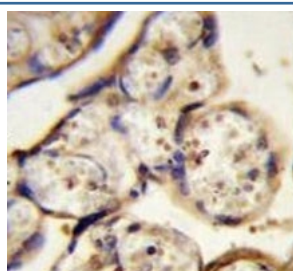
Catalog No.	Formulation	Size
F41687-0.4ML	In 1X PBS, pH 7.4, with 0.09% sodium azide	0.4 ml
F41687-0.08ML	In 1X PBS, pH 7.4, with 0.09% sodium azide	0.08 ml

[Bulk quote request](#)

Availability	1-3 business days
Species Reactivity	Human
Format	Antigen affinity purified
Clonality	Polyclonal (rabbit origin)
Isotype	Rabbit Ig
Purity	Antigen affinity
UniProt	Q9H4B7
Applications	Western Blot : 1:1000 IHC (Paraffin) : 1:50-1:100
Limitations	This TUBB antibody is available for research use only.



TUBB antibody western blot analysis in ZR-75-1 lysate.



TUBB antibody immunohistochemistry analysis in formalin fixed and paraffin embedded human placenta tissue.

Description

The tubulin family of globular proteins has several members, the most common of which are α -tubulin and β -tubulin; proteins which make up microtubules of the cytoskeletons of probably all eukaryotic cells. Except in the simplest eukaryotes, tubulin (100 kDa) exists in all cells as a heterodimer of two similar but non-identical polypeptides (55 kDa each), designated α and β . Within either family of α/β tubulin heterodimers, individual subunits diverge from each other (both within and across species) at less than 10% of the amino acid positions. The most extreme diversity is localized to the carboxyl-terminal 15 residues. Delta (δ) and epsilon (ϵ) tubulin have been found to localize at centrioles and may play a role in forming the mitotic spindle during mitosis, though neither is as well-studied as the α - and β -forms.

Application Notes

The stated application concentrations are suggested starting amounts. Titration of the TUBB antibody may be required due to differences in protocols and secondary/substrate sensitivity.

Immunogen

A portion of amino acids 4-31 from the human protein was used as the immunogen for this TUBB antibody.

Storage

Aliquot the TUBB antibody and store frozen at -20°C or colder. Avoid repeated freeze-thaw cycles.