

## TUBA1C Antibody / Tubulin alpha 1C (F41881)

Catalog No.	Formulation	Size
F41881-0.4ML	In 1X PBS, pH 7.4, with 0.09% sodium azide	0.4 ml
F41881-0.08ML	In 1X PBS, pH 7.4, with 0.09% sodium azide	0.08 ml

[Bulk quote request](#)

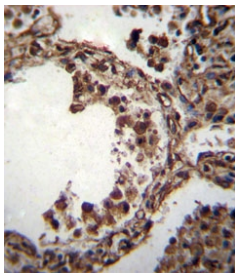
<b>Availability</b>	1-3 business days
<b>Species Reactivity</b>	Human, Mouse, Rat
<b>Predicted Reactivity</b>	Xenopus
<b>Format</b>	Antigen affinity purified
<b>Host</b>	Rabbit
<b>Clonality</b>	Polyclonal (rabbit origin)
<b>Isotype</b>	Rabbit Ig
<b>Purity</b>	Antigen affinity
<b>UniProt</b>	Q9BQE3
<b>Applications</b>	Western Blot : 1:1000 IHC (Paraffin) : 1:10-1:50
<b>Limitations</b>	This TUBA1C antibody is available for research use only.

95  
72  
55  
36  
28  
17

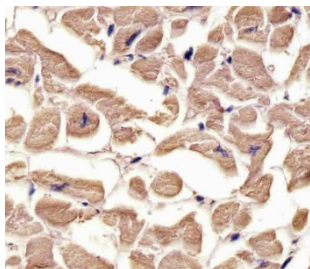
TUBA1C antibody western blot analysis in K562 lysate

100-  
70-  
55-  
35-  
25-  
15-  
1 2

Western blot analysis of lysate from (1) mouse liver and (2) rat testis tissue lysate using TUBA1C antibody at 1:1000.



IHC staining of FFPE human lung tissue with TUBA1C antibody. HIER: boil tissue sections in pH6, 10mM citrate buffer, for 10-20 min and allow to cool before testing.



IHC staining of FFPE human heart tissue with TUBA1C antibody. HIER: boil tissue sections in pH6, 10mM citrate buffer, for 10-20 min and allow to cool before testing.

## Description

Tubulin is the major constituent of microtubules. It binds two moles of GTP, one at an exchangeable site on the beta chain and one at a non-exchangeable site on the alpha-chain.

## Application Notes

Titration of the TUBA1C antibody may be required due to differences in protocols and secondary/substrate sensitivity.

## Immunogen

A portion of amino acids 414-441 from the human protein was used as the immunogen for this TUBA6 / TUBA1C antibody.

## Storage

Aliquot the TUBA1C antibody and store frozen at -20oC or colder. Avoid repeated freeze-thaw cycles.