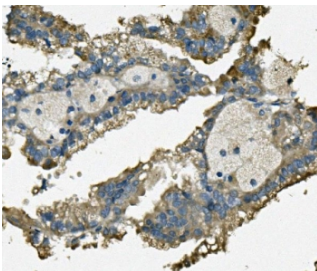


TTC11 Antibody / FIS1 (RQ5977)

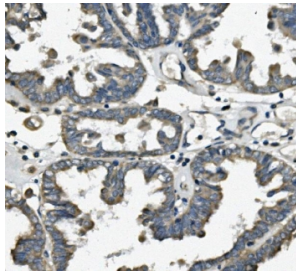
Catalog No.	Formulation	Size
RQ5977	0.5mg/ml if reconstituted with 0.2ml sterile DI water	100 ug

Bulk quote request

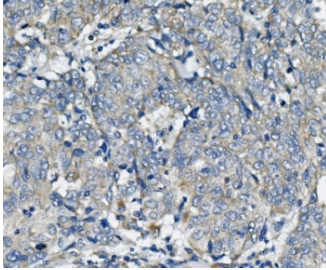
Availability	1-3 business days
Species Reactivity	Human, Mouse, Rat
Format	Antigen affinity purified
Host	Rabbit
Clonality	Polyclonal (rabbit origin)
Isotype	Rabbit IgG
Purity	Affinity purified
Buffer	Lyophilized from 1X PBS with 2% Trehalose and 0.025% sodium azide
UniProt	Q9Y3D6
Localization	Cytoplasmic
Applications	Western Blot : 0.5-1ug/ml Immunohistochemistry : 1-2ug/ml Immunofluorescence : 2-4ug/ml Flow Cytometry : 1-3ug/million cells Direct ELISA : 0.1-0.5ug/ml
Limitations	This FIS1 antibody is available for research use only.



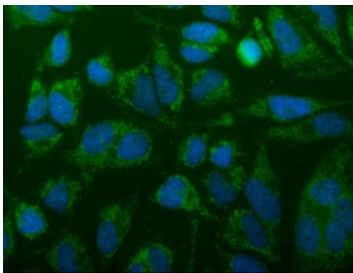
IHC staining of FFPE human renal cancer with TTC11 antibody. HIER: boil tissue sections in pH8 EDTA for 20 min and allow to cool before testing.



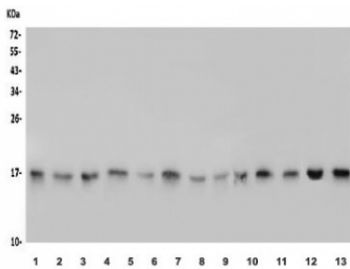
IHC staining of FFPE human ovarian cancer with TTC11 antibody. HIER: boil tissue sections in pH8 EDTA for 20 min and allow to cool before testing.



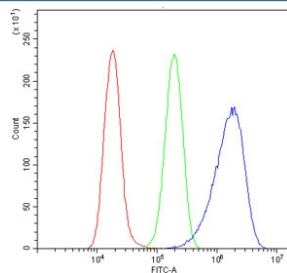
IHC staining of FFPE human lung cancer with TTC11 antibody. HIER: boil tissue sections in pH8 EDTA for 20 min and allow to cool before testing.



Immunofluorescent staining of FFPE human HeLa cells with TTC11 antibody (green) and DAPI nuclear stain (blue). HIER: steam section in pH6 citrate buffer for 20 min.



Western blot testing of rat 1) brain, 2) spleen, 3) kidney and mouse 4) brain, 5) spleen, 6) kidney, 7) NIH 3T3, 8) RAW264.7 and human 9) HEK293, 10) A549, 11) HeLa, 12) Raji and 13) Caco-2 lysate with TTC11 antibody. Predicted molecular weight ~17 kDa.



Flow cytometry testing of human A549 cells with TTC11 antibody at 1ug/million cells (blocked with goat sera); Red=cells alone, Green=isotype control, Blue= TTC11 antibody.

Description

Mitochondrial fission 1 protein (FIS1) is a protein that in humans is encoded by the FIS1 gene on chromosome 7. It is mapped to 7q22.1. The balance between fission and fusion regulates the morphology of mitochondria. TTC11 is a component of a mitochondrial complex that promotes mitochondrial fission. Its role in mitochondrial fission thus implicates it in the regulation of mitochondrial morphology, the cell cycle, and apoptosis. By extension, the protein is involved in associated diseases, including neurodegenerative diseases and cancers.

Application Notes

Optimal dilution of the FIS1 antibody should be determined by the researcher.

Immunogen

Recombinant human protein (amino acids M1-D121) was used as the immunogen for the FIS1 antibody.

Storage

After reconstitution, the FIS1 antibody can be stored for up to one month at 4°C. For long-term, aliquot and store at -20°C. Avoid repeated freezing and thawing.