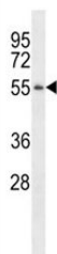


TSPY Antibody (F40035)

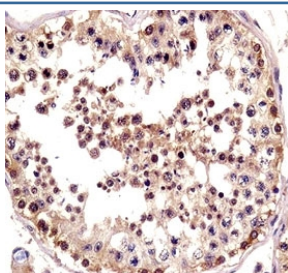
Catalog No.	Formulation	Size
F40035-0.4ML	In 1X PBS, pH 7.4, with 0.09% sodium azide	0.4 ml
F40035-0.08ML	In 1X PBS, pH 7.4, with 0.09% sodium azide	0.08 ml

[Bulk quote request](#)

Availability	1-3 business days
Species Reactivity	Human
Format	Antigen affinity purified
Host	Rabbit
Clonality	Polyclonal (rabbit origin)
Isotype	Rabbit Ig
Purity	Antigen affinity
UniProt	Q01534
Applications	Western Blot : 1:1000 IHC (Paraffin) : 1:10-1:50
Limitations	This TSPY antibody is available for research use only.



Western blot analysis of TSPY antibody pre-incubated without (Lane 1) and with (2) blocking peptide in LNCAP lysate.



TSPY antibody immunohistochemistry analysis in formalin fixed and paraffin embedded human testis tissue.

Description

TSPY may be involved in sperm differentiation and proliferation.

Application Notes

Titration of the TSPY antibody may be required due to differences in protocols and secondary/substrate sensitivity.

Immunogen

A portion of amino acids 274-303 from the human protein was used as the immunogen for this TSPY antibody.

Storage

Aliquot the TSPY antibody and store frozen at -20oC or colder. Avoid repeated freeze-thaw cycles.