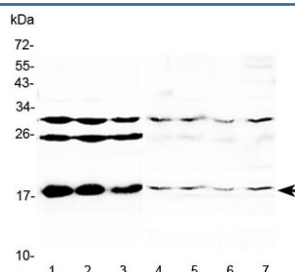


## TSLP Antibody / Thymic stromal lymphopoietin (R32884)

Catalog No.	Formulation	Size
R32884	0.5mg/ml if reconstituted with 0.2ml sterile DI water	100 ug

[Bulk quote request](#)

<b>Availability</b>	1-3 business days
<b>Species Reactivity</b>	Mouse, Rat
<b>Format</b>	Antigen affinity purified
<b>Host</b>	Rabbit
<b>Clonality</b>	Polyclonal (rabbit origin)
<b>Isotype</b>	Rabbit IgG
<b>Purity</b>	Antigen affinity
<b>Buffer</b>	Lyophilized from 1X PBS with 2.5% BSA, 0.025% sodium azide
<b>UniProt</b>	Q9JIE6
<b>Localization</b>	Secreted
<b>Applications</b>	Western Blot : 0.5-1ug/ml
<b>Limitations</b>	This TSLP antibody is available for research use only.



Western blot testing of 1) mouse liver, 2) mouse kidney, 3) mouse testis, 4) rat heart, 5) rat liver, 6) rat kidney and 7) rat testis lysate with TSLP antibody at 0.5ug/ml. Predicted molecular weight ~18 kDa.

### Description

Thymic stromal lymphopoietin, also called TSLP is a protein belonging to the cytokine family. This gene is mapped to 5q22.1. It encodes a hemopoietic cytokine proposed to signal through a heterodimeric receptor complex composed of the thymic stromal lymphopoietin receptor and the IL-7R alpha chain. It mainly impacts myeloid cells and induces the release of T cell-attracting chemokines from monocytes and enhances the maturation of CD11c(+) dendritic cells. The protein promotes T helper type 2 (TH2) cell responses that are associated with immunity in various inflammatory diseases,

including asthma, allergic inflammation and chronic obstructive pulmonary disease. The protein is therefore considered a potential therapeutic target for the treatment of such diseases.

## **Application Notes**

Optimal dilution of the TSLP antibody should be determined by the researcher.

## **Immunogen**

Amino acids QEMAEVQNICLNQTSQILRLWYSFMQSPE were used as the immunogen for the TSLP antibody.

## **Storage**

After reconstitution, the TSLP antibody can be stored for up to one month at 4°C. For long-term, aliquot and store at -20°C. Avoid repeated freezing and thawing.