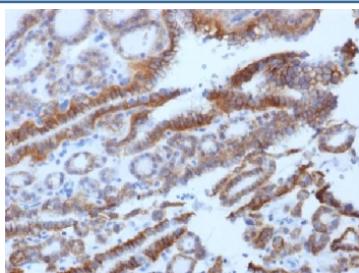


## TSH Receptor Antibody (beta chain) [clone SPM222] (V3432)

Catalog No.	Formulation	Size
V3432-100UG	0.2 mg/ml in 1X PBS with 0.1 mg/ml BSA (US sourced) and 0.05% sodium azide	100 ug
V3432-20UG	0.2 mg/ml in 1X PBS with 0.1 mg/ml BSA (US sourced) and 0.05% sodium azide	20 ug
V3432SAF-100UG	1 mg/ml in 1X PBS; BSA free, sodium azide free	100 ug

[Bulk quote request](#)

<b>Availability</b>	1-3 business days
<b>Species Reactivity</b>	Human
<b>Format</b>	Purified
<b>Clonality</b>	Monoclonal (mouse origin)
<b>Isotype</b>	Mouse IgG2a, kappa
<b>Clone Name</b>	SPM222
<b>Purity</b>	Protein G affinity chromatography
<b>UniProt</b>	P16473
<b>Localization</b>	Cytoplasmic, cell surface
<b>Applications</b>	Immunohistochemistry (FFPE) : 1-2ug/ml for 30 min at RT
<b>Limitations</b>	This TSH Receptor antibody is available for research use only.



IHC testing of FFPE human thyroid carcinoma with TSH Receptor antibody (clone SPM222). Required HIER: boil tissue sections in 10mM Tris buffer with 1mM EDTA, pH 8, for 10-20 min followed by cooling at RT for 20 min.

## Description

Thyroid-stimulating hormone (TSH, also known as thyrotropin) is a glycoprotein involved in the control of thyroid structure and metabolism, which stimulates the release of the thyroid hormones. TSH is regulated by thyroid hormone (T3) and

various retinoid compounds. TSH binds to the thyroid-stimulating hormone receptor (TSHR), which is cleaved into two subunits, A and B, and plays a major role in regulating thyroid function. The third cytoplasmic loop of TSHR has been identified as critical for its role in regulating inositol phosphate and cAMP formation. In Graves disease, an autoimmune disorder, TSHR is activated by autoantibodies, which may be stimulated by the cleavage of the A and B subunits.

## Application Notes

The concentration stated for each application is a general starting point. Variations in protocols, secondaries and substrates may require the TSH Receptor antibody to be titrated up or down for optimal performance.

## Immunogen

Recombinant human TSHR beta chain protein was used as the immunogen for this TSH Receptor antibody.

## Storage

Store the TSH Receptor antibody at 2-8°C (with azide) or aliquot and store at -20°C or colder (without azide).