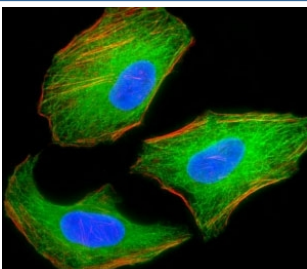


## TSC2 Antibody [clone 249CT19.1.3] (F40275)

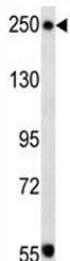
Catalog No.	Formulation	Size
F40275-0.4ML	In 1X PBS, pH 7.4, with 0.09% sodium azide	0.4 ml
F40275-0.08ML	In 1X PBS, pH 7.4, with 0.09% sodium azide	0.08 ml

[Bulk quote request](#)

<b>Availability</b>	1-3 business days
<b>Species Reactivity</b>	Human, Mouse
<b>Format</b>	Purified
<b>Host</b>	Mouse
<b>Clonality</b>	Monoclonal (mouse origin)
<b>Isotype</b>	Mouse IgG1, k
<b>Clone Name</b>	249CT19.1.3
<b>Purity</b>	Purified
<b>UniProt</b>	P49815
<b>Applications</b>	Immunofluorescence : 1:10-1:50 Western Blot : 1:100
<b>Limitations</b>	This TSC2 antibody is available for research use only.



Fluorescent image of HeLa cells stained with TSC2 antibody. Alexa Fluor 488 secondary (green), cytoplasmic actin (red) and nuclei counterstained with DAPI (blue) were used. TSC2 immunoreactivity is localized to the microtubules.



TSC2 antibody western blot analysis in mouse NIH3T3 lysate. Predicted molecular weight ~200 kDa.

## Description

Mutations in this gene lead to tuberous sclerosis complex. Its gene product is believed to be a tumor suppressor and is able to stimulate specific GTPases. The protein associates with hamartin in a cytosolic complex, possibly acting as a chaperone for hamartin. Alternative splicing results in multiple transcript variants encoding different isoforms.

## Application Notes

Titration of the TSC2 antibody may be required due to differences in protocols and secondary/substrate sensitivity.

## Immunogen

This TSC2 antibody was produced from a mouse immunized with TSC2 recombinant protein.

## Storage

Aliquot the TSC2 antibody and store frozen at -20oC or colder. Avoid repeated freeze-thaw cycles.