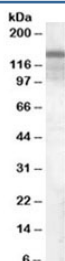


TSC1 Antibody (R35353)

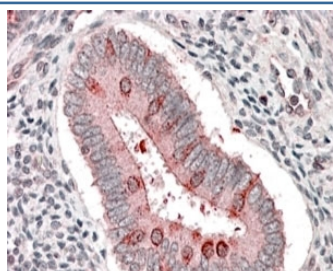
Catalog No.	Formulation	Size
R35353-100UG	0.5 mg/ml in 1X TBS, pH7.3, with 0.5% BSA (US sourced) and 0.02% sodium azide	100 ug

[Bulk quote request](#)

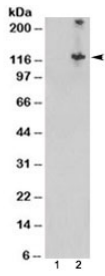
Availability	1-3 business days
Species Reactivity	Human
Predicted Reactivity	Dog, Mouse, Rat
Format	Antigen affinity purified
Clonality	Polyclonal (goat origin)
Isotype	Goat Ig
Purity	Antigen affinity
Gene ID	7248
Applications	Western Blot : 0.1-1ug/ml Immunohistochemistry (FFPE) : 3-6ug/ml ELISA (peptide) LOD : 1:128000
Limitations	This TSC1 antibody is available for research use only.



Western blot testing of human brain lysate with TSC1 antibody at 0.1ug/ml.
Expected/observed molecular weight: 130~150kDa.



IHC staining of FFPE human uterus with TSC1 antibody at 3.8ug/ml. HIER: steamed with pH6 citrate buffer, AP-staining.



Western blot of HEK293 lysate overexpressing human TSC1 probed with TSC1 antibody (mock transfection in lane 1). Expected/observed molecular weight: 130~150/120kDa.

Description

Additional name(s) for this target protein: Tuberous sclerosis 1, Hamartin

Application Notes

Optimal dilution of the TSC1 antibody should be determined by the researcher.

1. This TSC1 antibody is specific for isoform 1.

Immunogen

Amino acids QLHIMDYNETHHEH were used as the immunogen for this TSC1 antibody.

Storage

Aliquot and store the TSC1 antibody at -20oC.