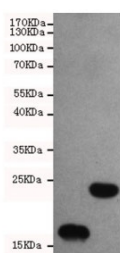


## TRX Antibody / TXN / Thioredoxin [clone 3C1-H10] (F54050)

Catalog No.	Formulation	Size
F54050-0.1ML	In PBS with 50% glycerol and 0.03% ProClin 300	0.1 ml

[Bulk quote request](#)

<b>Availability</b>	1-3 business days
<b>Species Reactivity</b>	NA
<b>Format</b>	Purified
<b>Host</b>	Mouse
<b>Clonality</b>	Monoclonal (mouse origin)
<b>Isotype</b>	Mouse IgG1
<b>Clone Name</b>	3C1-H10
<b>Purity</b>	Protein G affinity
<b>UniProt</b>	P10599
<b>Applications</b>	Western Blot : 1:1000
<b>Limitations</b>	This TRX antibody is available for research use only.



Western blot testing of bacterial lysates containing TRX-tagged proteins of different MWs using TRX antibody at 1:1000.

## Description

Thioredoxin is a class of small redox proteins known to be present in all organisms. It plays a role in many important biological processes, including redox signaling. In humans, it is encoded by the TXN gene. Loss-of-function mutation of either of the two human thioredoxin genes is lethal at the four-cell stage of the developing embryo. Although not entirely understood, thioredoxin plays a central role in humans and is increasingly linked to medicine through their response to reactive oxygen species (ROS). In plants, thioredoxins regulate a spectrum of critical functions, ranging from photosynthesis to growth, flowering and the development and germination of seeds. It has also recently been found to play a role in cell-to-cell communication.

Solubilization tags are used, especially for recombinant proteins expressed in chaperone-deficient species such as *E. coli*, to assist in the proper folding in proteins and keep them from precipitating. These include thioredoxin (TRX) and poly(NANP). [Wiki]

## Application Notes

The stated application concentrations are suggested starting points. Titration of the TRX antibody may be required due to differences in protocols and secondary/substrate sensitivity.

## Immunogen

A recombinant protein was used as the immunogen for this TRX antibody.

## Storage

Store the TRX antibody at -20oC.