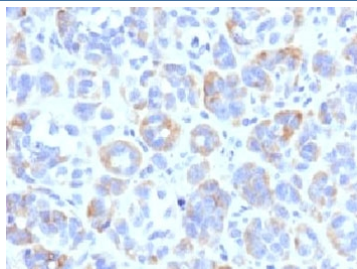


TRP1 Antibody / Tyrosinase-Related Protein-1 / TYRP1 [clone TYRR1-1] (V7169)

Catalog No.	Formulation	Size
V7169-100UG	0.2 mg/ml in 1X PBS with 0.1 mg/ml BSA (US sourced) and 0.05% sodium azide	100 ug
V7169-20UG	0.2 mg/ml in 1X PBS with 0.1 mg/ml BSA (US sourced) and 0.05% sodium azide	20 ug
V7169SAF-100UG	1 mg/ml in 1X PBS; BSA free, sodium azide free	100 ug
V7169IHC-7ML	Prediluted in 1X PBS with 0.1 mg/ml BSA (US sourced) and 0.05% sodium azide; *For IHC use only*	7 ml

Bulk quote request

Availability	1-3 business days
Species Reactivity	Human
Format	Purified
Host	Mouse
Clonality	Monoclonal (mouse origin)
Isotype	Mouse IgG2a, kappa
Clone Name	TYRR1-1
Purity	Protein G affinity chromatography
UniProt	P17643
Localization	Cytoplasmic
Applications	Immunohistochemistry (FFPE) : 3-6ug/ml for 30 min at RT Prediluted IHC Only Format : incubate for 30 min at RT (1)
Limitations	This TRP1 antibody is available for research use only.



IHC testing of FFPE human melanoma with TRP1 antibody (clone TYRR1-1). Required HIER: boil tissue sections in 10mM Tris with 1mM EDTA, pH 9, for 10-20 min followed by cooling at RT for 20 min.

Description

Tyrosinase-Related Protein-1/TYRP1/TRP1 is a melanocyte-specific gene product involved in melanin synthesis. While mouse Tyrp1 possesses dihydroxyindole carboxylic acid oxidase activity, the function in human melanocytes is less clear. In addition to its role in melanin synthesis, Tyrp1 is involved in stabilizing of tyrosinase protein and modulating its catalytic activity. Tyrp1 is also involved in maintenance of melanosome structure and affects melanocyte proliferation and melanocyte cell death. [Wiki]

Application Notes

Titration of the TRP1 antibody may be required for optimal performance.

1. The prediluted format is supplied in a dropper bottle and is optimized for use in IHC. After epitope retrieval step (if required), drip mAb solution onto the tissue section and incubate at RT for 30 min.

Immunogen

Recombinant full-length human protein was used as the immunogen for the TRP1 antibody.

Storage

Store the TRP1 antibody at 2-8°C (with azide) or aliquot and store at -20°C or colder (without azide).