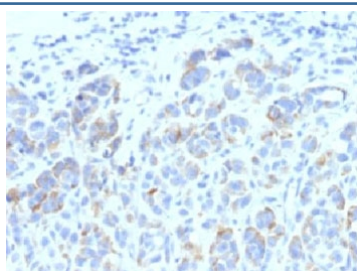


TRP1 Antibody / Tyrosinase-Related Protein-1 Antibody / TYRP1 [clone SPM611] (V2917)

Catalog No.	Formulation	Size
V2917-100UG	0.2 mg/ml in 1X PBS with 0.1 mg/ml BSA (US sourced) and 0.05% sodium azide	100 ug
V2917-20UG	0.2 mg/ml in 1X PBS with 0.1 mg/ml BSA (US sourced) and 0.05% sodium azide	20 ug
V2917SAF-100UG	1 mg/ml in 1X PBS; BSA free, sodium azide free	100 ug
V2917IHC-7ML	Prediluted in 1X PBS with 0.1 mg/ml BSA (US sourced) and 0.05% sodium azide; *For IHC use only*	7 ml

Bulk quote request

Availability	1-3 business days
Species Reactivity	Human, Mouse
Format	Purified
Host	Mouse
Clonality	Monoclonal (mouse origin)
Isotype	Mouse IgG2a, kappa
Clone Name	SPM611
Purity	Protein G affinity chromatography
UniProt	P17643
Localization	Cytoplasmic
Applications	Immunohistochemistry (FFPE) : 2-4ug/ml for 30 min at RT
Limitations	This TRP1 antibody is available for research use only.



IHC: Formalin-fixed, paraffin-embedded human melanoma stained with TRP1 antibody (SPM611)

Description

It reacts with a 75kDa melanocyte-specific gene product, identified as Tyrosinase-related protein-1 (TRP-1). It is involved in melanin synthesis. TRP1 is present on the melanosomal membranes of melanoma, normal melanocytes and nevi. Recent evidence suggests that TRP-1 is involved in maintaining stability of tyrosinase protein and modulating its catalytic activity. TRP-1 is also involved in maintenance of melanosome ultrastructure and affects melanocyte proliferation and cell death.

Application Notes

Optimal dilution of the TRP1 antibody should be determined by the researcher.

1. Staining of formalin-fixed tissues requires boiling tissue sections in 10mM Tris with 1mM EDTA, pH 9, for 10-20 min followed by cooling at RT for 20 min.
2. The prediluted format is supplied in a dropper bottle and is optimized for use in IHC. After epitope retrieval step (if required), drip mAb solution onto the tissue section and incubate at RT for 30 min.

Immunogen

Recombinant full-length human protein was used as the immunogen for the TRP1 antibody.

Storage

Store the TRP1 antibody at 2-8oC (with azide) or aliquot and store at -20oC or colder (without azide).