

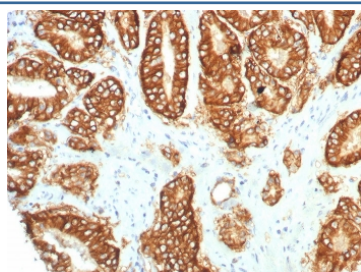
TROP2 Antibody / TACSTD2 [clone TACSTD2/7349R] (V4667)

Catalog No.	Formulation	Size
V4667-100UG	0.2 mg/ml in 1X PBS with 0.1 mg/ml BSA (US sourced), 0.05% sodium azide	100 ug
V4667-20UG	0.2 mg/ml in 1X PBS with 0.1 mg/ml BSA (US sourced), 0.05% sodium azide	20 ug
V4667SAF-100UG	1 mg/ml in 1X PBS; BSA free, sodium azide free	100 ug

Recombinant **RABBIT MONOCLONAL**

[Bulk quote request](#)

Availability	1-3 business days
Species Reactivity	Human
Format	Purified
Clonality	Recombinant Rabbit Monoclonal
Isotype	Rabbit IgG, kappa
Clone Name	TACSTD2/7349R
Purity	Protein A/G affinity
UniProt	P09758
Localization	Cell surface
Applications	Immunohistochemistry (FFPE) : 1-2ug/ml for 30 min at RT
Limitations	This TROP2 antibody is available for research use only.



IHC staining of FFPE human prostate carcinoma tissue with TROP2 antibody (clone TACSTD2/7349R). HIER: boil tissue sections in pH 9 10mM Tris with 1mM EDTA for 20 min and allow to cool before testing.

Description

TACSTD2/TROP2 is a cell surface glycoprotein receptor. It is a single pass type I membrane protein containing one thyroglobulin type-1 domain, an epidermal growth factor-like repeat, a phosphatidylinositol binding site and tyrosine phosphorylation sites near the C-terminus. It plays a role in transducing intracellular calcium signals. It is expressed in trophoblast cells, cornea and multi-stratified epithelia. It is also highly expressed in several types of tumors and is involved

in regulating the growth of carcinoma cells.

Application Notes

Optimal dilution of the TROP2 antibody should be determined by the researcher.

Immunogen

A recombinant partial protein sequence (within amino acids 232-323) from the human protein was used as the immunogen for the TROP2 antibody.

Storage

Aliquot the TROP2 antibody and store frozen at -20oC or colder. Avoid repeated freeze-thaw cycles.