

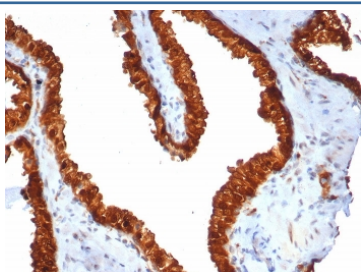
## TROP2 Antibody / TACSTD2 [clone TACSTD2/7348R] (V4666)

| Catalog No.    | Formulation   | Size   |
|----------------|---|--------|
| V4666-100UG    | 0.2 mg/ml in 1X PBS with 0.1 mg/ml BSA (US sourced), 0.05% sodium azide | 100 ug |
| V4666-20UG     | 0.2 mg/ml in 1X PBS with 0.1 mg/ml BSA (US sourced), 0.05% sodium azide | 20 ug  |
| V4666SAF-100UG | 1 mg/ml in 1X PBS; BSA free, sodium azide free                          | 100 ug |

Recombinant **RABBIT MONOCLONAL**

[Bulk quote request](#)

|                    |   |
|--------------------|---|
| Availability       | 1-3 business days                                       |
| Species Reactivity | Human   |
| Format             | Purified  |
| Clonality          | Recombinant Rabbit Monoclonal                           |
| Isotype            | Rabbit IgG, kappa                                       |
| Clone Name         | TACSTD2/7348R   |
| Purity             | Protein A/G affinity                                    |
| UniProt            | P09758  |
| Localization       | Cell Surface  |
| Applications       | Immunohistochemistry (FFPE) : 1-2ug/ml for 30 min at RT |
| Limitations        | This TROP2 antibody is available for research use only. |



IHC staining of FFPE human prostate carcinoma tissue with TACSTD2 antibody (clone TACSTD2/7348R). HIER: boil tissue sections in pH 9 10mM Tris with 1mM EDTA for 20 min and allow to cool before testing.

### Description

TACSTD2/TROP2 is a cell surface glycoprotein receptor. It is a single pass type I membrane protein containing one thyroglobulin type-1 domain, an epidermal growth factor-like repeat, a phosphatidylinositol binding site and tyrosine phosphorylation sites near the C-terminus. It plays a role in transducing intracellular calcium signals. It is expressed in trophoblast cells, cornea and multi-stratified epithelia. It is also highly expressed in several types of tumors and is involved

in regulating the growth of carcinoma cells.

## **Application Notes**

Optimal dilution of the TROP2 antibody should be determined by the researcher.

## **Immunogen**

A recombinant fragment of human TACSTD2 protein was used as the immunogen for the TROP2 antibody.

## **Storage**

Aliquot the TROP2 antibody and store frozen at -20oC or colder. Avoid repeated freeze-thaw cycles.