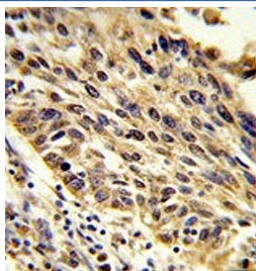


TRIP13 Antibody / PCH2 / Pachytene checkpoint protein 2 homolog (F54779)

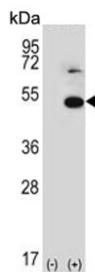
Catalog No.	Formulation	Size
F54779-0.4ML	In 1X PBS, pH 7.4, with 0.09% sodium azide	0.4 ml
F54779-0.08ML	In 1X PBS, pH 7.4, with 0.09% sodium azide	0.08 ml

[Bulk quote request](#)

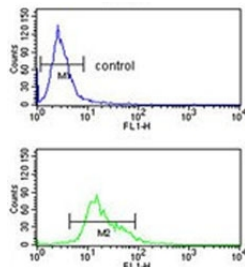
Availability	1-3 business days
Species Reactivity	Human
Format	Purified
Host	Rabbit
Clonality	Polyclonal (rabbit origin)
Isotype	Rabbit Ig
Purity	Purified
UniProt	Q15645
Localization	Cytoplasmic, nuclear
Applications	Western Blot : 1:500-1:2000 Immunohistochemistry (FFPE) : 1:25 Flow Cytometry : 1:25 (1x10 ⁶ cells)
Limitations	This TRIP13 antibody is available for research use only.



IHC testing of FFPE human lung carcinoma tissue with TRIP13 antibody. HIER: steam section in pH6 citrate buffer for 20 min and allow to cool prior to staining.



Western blot testing of 1) non-transfected and 2) transfected 293 cell lysate with TRIP13 antibody. Predicted molecular weight ~49 kDa.



Flow cytometry testing of human K562 cells with TRIP13 antibody; Blue=isotype control, Green= TRIP13 antibody.

Description

TRIP13 specifically interacts with the ligand binding domain of the thyroid receptor (TR). This interaction does not require the presence of thyroid hormone for its interaction.

Application Notes

The stated application concentrations are suggested starting points. Titration of the TRIP13 antibody may be required due to differences in protocols and secondary/substrate sensitivity.

Immunogen

A portion of amino acids 64-90 from the human protein was used as the immunogen for the TRIP13 antibody.

Storage

Aliquot the TRIP13 antibody and store frozen at -20oC or colder. Avoid repeated freeze-thaw cycles.