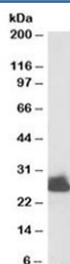


Triosephosphate isomerase Antibody (R34724)

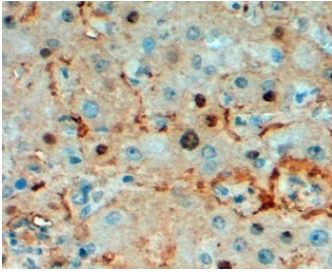
| Catalog No. | Formulation | Size |
|--------------|---|--------|
| R34724-100UG | 0.5 mg/ml in 1X TBS, pH7.3, with 0.5% BSA (US sourced) and 0.02% sodium azide | 100 ug |

[Bulk quote request](#)

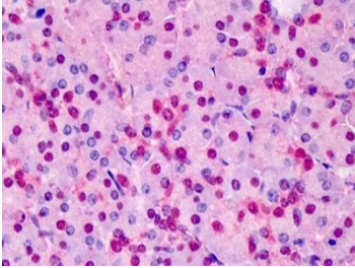
| | |
|----------------------|--|
| Availability | 1-3 business days |
| Species Reactivity | Human, Mouse |
| Predicted Reactivity | Cow, Dog, Rat |
| Format | Antigen affinity purified |
| Host | Goat |
| Clonality | Polyclonal (goat origin) |
| Isotype | Goat Ig |
| Purity | Antigen affinity |
| Gene ID | 7167 |
| Localization | Nuclear, cytoplasmic |
| Applications | Western Blot : 0.01-0.03ug/ml Immunohistochemistry (FFPE) : 2-5ug/ml ELISA (peptide) LOD : 1:16000 |
| Limitations | This Triosephosphate isomerase antibody is available for research use only. |



Western blot testing of human liver lysate with Triosephosphate isomerase antibody at 0.003ug/ml. Predicted molecular weight: ~26 kDa.



IHC staining of FFPE human liver at 2ug/ml. HIER: steamed with pH9 Tris/EDTA buffer, HRP-staining.



IHC staining of FFPE human pancreas tissue with Triosephosphate isomerase antibody at 5ug/ml. HIER: steamed with pH6 citrate buffer, AP-staining.

Description

Additional name(s) for this target protein: TPI1

Application Notes

Optimal dilution of the Triosephosphate isomerase antibody should be determined by the researcher.

Immunogen

Amino acids LKPEFVDIINAKQ were used as the immunogen for this Triosephosphate isomerase antibody.

Storage

Aliquot and store the Triosephosphate isomerase antibody at -20oC.