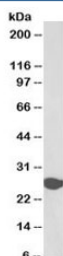


Triosephosphate isomerase Antibody Biotin Conjugate (R34724BTN)

| Catalog No. | Formulation | Size |
|-------------|---|--------|
| R34724BTN | 0.5 mg/ml in 1X TBS, pH7.3, with 0.5% BSA (US sourced) and 0.02% sodium azide | 100 ug |

[Bulk quote request](#)

| | |
|----------------------|---|
| Availability | 1-3 business days |
| Species Reactivity | Human, Mouse |
| Predicted Reactivity | Cow, Dog, Rat |
| Format | Biotin Conjugate |
| Host | Goat |
| Clonality | Polyclonal (goat origin) |
| Isotype | Goat Ig |
| Purity | Antigen affinity |
| Gene ID | 7167 |
| Applications | Western Blot : 0.03-0.1ug/ml Immunohistochemistry (FFPE) : suitable ELISA (peptide) LOD : 1:16000 |
| Limitations | This Triosephosphate isomerase antibody is available for research use only. |



Western blot testing of human liver lysate with biotinylated Triosephosphate isomerase antibody at 0.03ug/ml. Predicted molecular weight: ~26kDa.

Description

Additional name(s) for this target protein: TPI1

Application Notes

Optimal dilution of the Triosephosphate isomerase antibody should be determined by the researcher.

Immunogen

Amino acids LKPEFVDIINAKQ were used as the immunogen for this Triosephosphate isomerase antibody.

Storage

Aliquot and store the Triosephosphate isomerase antibody at -20oC.