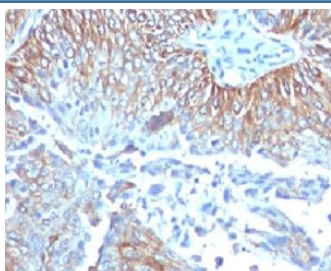


## TRIM29 Antibody [clone TPMP29-1] (V7087)

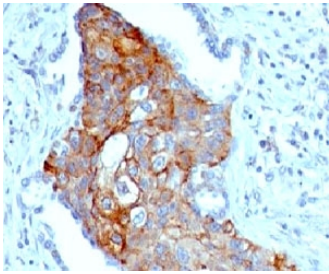
Catalog No.	Formulation	Size
V7087-100UG	0.2 mg/ml in 1X PBS with 0.1 mg/ml BSA (US sourced) and 0.05% sodium azide	100 ug
V7087-20UG	0.2 mg/ml in 1X PBS with 0.1 mg/ml BSA (US sourced) and 0.05% sodium azide	20 ug
V7087SAF-100UG	1 mg/ml in 1X PBS; BSA free, sodium azide free	100 ug
V7087IHC-7ML	Prediluted in 1X PBS with 0.1 mg/ml BSA (US sourced) and 0.05% sodium azide; *For IHC use only*	7 ml

[Bulk quote request](#)

<b>Availability</b>	1-3 business days
<b>Species Reactivity</b>	Human
<b>Format</b>	Purified
<b>Host</b>	Mouse
<b>Clonality</b>	Monoclonal (mouse origin)
<b>Isotype</b>	Mouse IgG2a, kappa
<b>Clone Name</b>	TPMP29-1
<b>Purity</b>	Protein G affinity chromatography
<b>UniProt</b>	Q14134
<b>Localization</b>	Cytoplasmic & cell surface
<b>Applications</b>	Immunohistochemistry (FFPE) : 1-2ug/ml for 30 min at RT Prediluted IHC Only Format : incubate for 30 min at RT (1)
<b>Limitations</b>	This TRIM29 antibody is available for research use only.



IHC testing of FFPE human esophageal carcinoma and TRIM29 antibody (clone TPMP29-1). FFPE testing requires sections to be boiled in pH 9 10mM Tris with 1mM EDTA for 10-20 minutes, followed by cooling at RT for 20 minutes, prior to staining.



IHC testing of FFPE human lung squamous cell carcinoma and TRIM29 antibody (clone TPMP29-1). FFPE testing requires sections to be boiled in pH 9 10mM Tris with 1mM EDTA for 10-20 minutes, followed by cooling at RT for 20 minutes, prior to staining.

## Description

Tripartite motif-containing protein 29 interacts with the intermediate filament protein vimentin, a substrate for the PKC family of protein kinases, and with hPKCI-1, an inhibitor of the PKCs. TRIM29 protein contains both zinc finger and leucine zipper motifs, suggesting that it may form homodimers and possibly associate with DNA.

## Application Notes

Titration of the TRIM29 antibody may be required for optimal performance.

1. The prediluted format is supplied in a dropper bottle and is optimized for use in IHC. After epitope retrieval step (if required), drip mAb solution onto the tissue section and incubate at RT for 30 min.

## Immunogen

An N-terminal human recombinant protein fragment was used as the immunogen for the TRIM29 antibody.

## Storage

Store the TRIM29 antibody at 2-8°C (with azide) or aliquot and store at -20°C or colder (without azide).