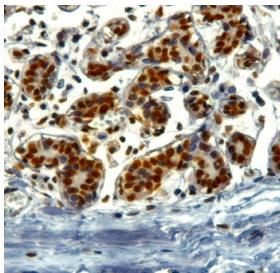


TRIM28 Antibody (R36073)

Catalog No.	Formulation	Size
R36073-100UG	0.5 mg/ml in 1X TBS, pH7.3, with 0.5% BSA (US sourced) and 0.02% sodium azide	100 ug

[Bulk quote request](#)

Availability	1-3 business days
Species Reactivity	Human
Predicted Reactivity	Mouse
Format	Antigen affinity purified
Host	Goat
Clonality	Polyclonal (goat origin)
Isotype	Goat Ig
Purity	Antigen affinity
Gene ID	10155
Localization	Nuclear
Applications	Immunohistochemistry (FFPE) : 2-4ug/ml ELISA (peptide) LOD : 1:2000
Limitations	This TRIM28 antibody is available for research use only.



IHC testing of FFPE human breast with TRIM28 antibody at 2ug/ml. HIER: steamed with pH9 citrate buffer, HRP-staining.

Description

Additional name(s) for this target protein: Tripartite motif-containing 28, KRAB-associated protein 1 (KAPI), TIF1 beta

Application Notes

Optimal dilution of the TRIM28 antibody should be determined by the researcher.

Immunogen

Amino acids SSQELSGGPGDGP were used as the immunogen for this TRIM28 antibody.

Storage

Aliquot and store the TRIM28 antibody at -20oC.