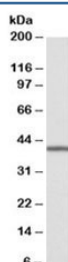


## TRIB1 Antibody (R34469)

| Catalog No.  | Formulation   | Size   |
|--------------|---|--------|
| R34469-100UG | 0.5 mg/ml in 1X TBS, pH7.3, with 0.5% BSA (US sourced) and 0.02% sodium azide | 100 ug |

[Bulk quote request](#)

|                      |  |
|----------------------|--|
| Availability         | 1-3 business days  |
| Species Reactivity   | Human  |
| Predicted Reactivity | Cow, Dog, Mouse, Pig, Rat                                  |
| Format               | Antigen affinity purified                                  |
| Clonality            | Polyclonal (goat origin)                                   |
| Isotype              | Goat Ig  |
| Purity               | Antigen affinity   |
| Gene ID              | 10221  |
| Applications         | Western Blot : 0.3-1ug/ml<br>ELISA (peptide) LOD : 1:64000 |
| Limitations          | This TRIB1 antibody is available for research use only.    |



Western blot testing of human bone marrow lysate with TRIB1 antibody at 0.3ug/ml.  
Predicted molecular weight: ~41kDa.

## Description

Additional name(s) for this target protein: Tribbles 1

## Application Notes

Optimal dilution of the TRIB1 antibody should be determined by the researcher.

## Immunogen

Amino acids KHYQDKIRPYIQLPS were used as the immunogen for this TRIB1 antibody.

## **Storage**

Aliquot and store the TRIB1 antibody at -20oC.