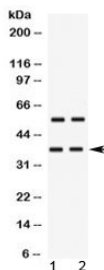


TREX2 Antibody (R32573)

Catalog No.	Formulation	Size
R32573	0.5mg/ml if reconstituted with 0.2ml sterile DI water	100 ug

[Bulk quote request](#)

Availability	1-3 business days
Species Reactivity	Human
Format	Antigen affinity purified
Host	Rabbit
Clonality	Polyclonal (rabbit origin)
Isotype	Rabbit IgG
Purity	Antigen affinity
Buffer	Lyophilized from 1X PBS with 2.5% BSA and 0.025% sodium azide
UniProt	Q9BQ50
Localization	Nuclear
Applications	Western Blot : 0.5-1ug/ml
Limitations	This TREX2 antibody is available for research use only.



Western blot testing of human 1) HeLa and 2) MCF7 cell lysate with TREX2 antibody at 0.5ug/ml. Predicted molecular weight ~31/26 kDa (isoforms 1/2), observed here at ~37 kDa.

Description

Three prime repair exonuclease 2 is an enzyme that in humans is encoded by the TREX2 gene. By genomic sequence analysis, the TREX2 gene is mapped to chromosome Xq28. This gene encodes a protein with 3' exonuclease activity. Enzymes with this activity are involved in DNA replication, repair, and recombination. Similarity to an E. coli protein suggests that this enzyme may be a subunit of DNA polymerase III, which does not have intrinsic exonuclease activity.

Application Notes

Differences in protocols and secondary/substrate sensitivity may require the TREX2 antibody to be titrated for optimal performance.

Immunogen

Amino acids E69-A279 from the human protein were used as the immunogen for the TREX2 antibody.

Storage

After reconstitution, the TREX2 antibody can be stored for up to one month at 4°C. For long-term, aliquot and store at -20°C. Avoid repeated freezing and thawing.