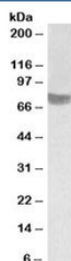


TRC8 Antibody (R34302)

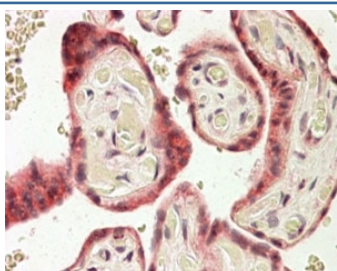
Catalog No.	Formulation	Size
R34302-100UG	0.5 mg/ml in 1X TBS, pH7.3, with 0.5% BSA (US sourced) and 0.02% sodium azide	100 ug

[Bulk quote request](#)

Availability	1-3 business days
Species Reactivity	Human
Predicted Reactivity	Dog
Format	Antigen affinity purified
Clonality	Polyclonal (goat origin)
Isotype	Goat Ig
Purity	Antigen affinity
Gene ID	11236
Applications	Western Blot : 0.3-1ug/ml Immunohistochemistry (FFPE) : 3-4ug/ml ELISA (peptide) LOD : 1:16000
Limitations	This TRC8 antibody is available for research use only.



Western blot testing of human skeletal muscle lysate with TRC8 antibody at 1ug/ml. Predicted/observed molecular weight: ~75kDa.



IHC staining of FFPE human placenta with TRC8 antibody at 4ug/ml. HIER: steamed with pH6 citrate buffer, AP-staining.

Description

Additional name(s) for this target protein: Multiple membrane spanning receptor TRC8; patched related protein translocated in renal cancer; ring finger protein 139; RNF139

Application Notes

Optimal dilution of the TRC8 antibody should be determined by the researcher.

Immunogen

Amino acids HTGAAEEFNDDT were used as the immunogen for this TRC8 antibody.

Storage

Aliquot and store the TRC8 antibody at -20oC.