

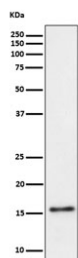
TRAPPC2 Antibody / Trafficking protein particle complex 2 [clone 28T69] (RQ8490)

| Catalog No. | Formulation | Size |
|-------------|--|--------|
| RQ8490 | Antibody in PBS with 0.02% sodium azide, 50% glycerol and 0.4-0.5mg/ml BSA | 100 ug |

Recombinant **RABBIT MONOCLONAL**

[Bulk quote request](#)

| | |
|--------------------|---|
| Availability | 1-3 days |
| Species Reactivity | Human |
| Format | Purified |
| Host | Rabbit |
| Clonality | Recombinant Rabbit Monoclonal |
| Isotype | Rabbit IgG |
| Clone Name | 28T69 |
| Purity | Affinity chromatography |
| UniProt | P0DI81 |
| Applications | Western Blot : 1:500-1:2000 |
| Limitations | This TRAPPC2 antibody is available for research use only. |



Western blot testing of human Raji cell lysate with TRAPPC2 antibody. Predicted molecular weight ~16 kDa.

Description

Trafficking protein particle complex 2 may play a role in vesicular transport from endoplasmic reticulum to Golgi. [UniProt]

Application Notes

Optimal dilution of the TRAPPC2 antibody should be determined by the researcher.

Immunogen

A synthetic peptide from human Trafficking protein particle complex 2 protein was used as the immunogen for the TRAPPC2 antibody.

Storage

Store the TRAPPC2 antibody at -20oC.