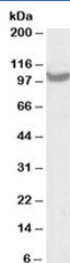


TRAP2 Antibody / PSMD2 (R36330)

Catalog No.	Formulation	Size
R36330-100UG	0.5 mg/ml in 1X TBS, pH7.3, with 0.5% BSA (US sourced) and 0.02% sodium azide	100 ug

[Bulk quote request](#)

Availability	1-3 business days
Species Reactivity	Human
Predicted Reactivity	Cow, Dog, Mouse, Rat
Format	Antigen affinity purified
Host	Goat
Clonality	Polyclonal (goat origin)
Isotype	Goat Ig
Purity	Antigen affinity
Gene ID	5708
Applications	Western Blot : 0.03-0.3ug/ml ELISA (peptide) LOD : 1:16000
Limitations	This TRAP2 antibody is available for research use only.



Western blot testing of A431 lysate with TRAP2 antibody at 0.03 ug/ml.
Predicted/observed molecular weight: ~100kDa.

Description

Additional name(s) for this target protein: Tumor necrosis factor receptor associated protein 2; PSMD2; Proteasome subunit 26S; Proteasome 26S S2 antibody

Application Notes

Optimal dilution of the TRAP2 antibody should be determined by the researcher.

Immunogen

Amino acids VILRKNPNYDL were used as the immunogen for this TRAP2 antibody.

Storage

Aliquot and store the TRAP2 antibody at -20oC.