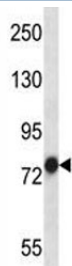


TRAP-1 Antibody (HSP75) (F43545)

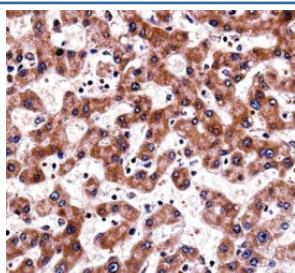
Catalog No.	Formulation	Size
F43545-0.4ML	In 1X PBS, pH 7.4, with 0.09% sodium azide	0.4 ml
F43545-0.08ML	In 1X PBS, pH 7.4, with 0.09% sodium azide	0.08 ml

[Bulk quote request](#)

Availability	1-3 business days
Species Reactivity	Human
Format	Antigen affinity purified
Clonality	Polyclonal (rabbit origin)
Isotype	Rabbit Ig
Purity	Antigen affinity
UniProt	Q12931
Localization	Cytoplasmic
Applications	Western Blot : 1:1000 IHC (Paraffin) : 1:10-1:50
Limitations	This TRAP-1 antibody is available for research use only.



TRAP-1 antibody western blot analysis in NCI-H460 lysate. Expected molecular weight: 75-80 kDa.



TRAP-1 antibody immunohistochemistry analysis in formalin fixed and paraffin embedded human liver tissue.

Description

HSP90 proteins are highly conserved molecular chaperones that have key roles in signal transduction, protein folding, protein degradation, and morphologic evolution. HSP90 proteins normally associate with other cochaperones and play important roles in folding newly synthesized proteins or stabilizing and refolding denatured proteins after stress. TRAP1 is a mitochondrial HSP90 protein. Other HSP90 proteins are found in cytosol (HSP90AA1) and endoplasmic reticulum (HSP90B1).

Application Notes

Titration of the TRAP-1 antibody may be required due to differences in protocols and secondary/substrate sensitivity.

Immunogen

A portion of amino acids 542-570 from the human protein was used as the immunogen for this TRAP-1 antibody.

Storage

Aliquot the TRAP-1 antibody and store frozen at -20oC or colder. Avoid repeated freeze-thaw cycles.