

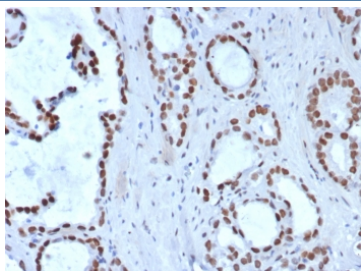
## Transducin-like enhancer protein 1 Antibody / TLE1 [clone TLE1/8007R] (V5294)

Catalog No.	Formulation	Size
V5294-100UG	0.2 mg/ml in 1X PBS with 0.1 mg/ml BSA (US sourced), 0.05% sodium azide	100 ug
V5294-20UG	0.2 mg/ml in 1X PBS with 0.1 mg/ml BSA (US sourced), 0.05% sodium azide	20 ug
V5294SAF-100UG	1 mg/ml in 1X PBS; BSA free, sodium azide free	100 ug

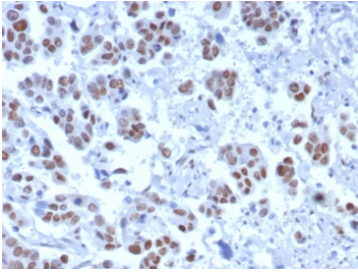
Recombinant **RABBIT MONOCLONAL**

[Bulk quote request](#)

<b>Availability</b>	1-3 business days
<b>Species Reactivity</b>	Human
<b>Format</b>	Purified
<b>Host</b>	Rabbit
<b>Clonality</b>	Recombinant Rabbit Monoclonal
<b>Isotype</b>	Rabbit IgG, kappa
<b>Clone Name</b>	TLE1/8007R
<b>Purity</b>	Protein A/G affinity
<b>UniProt</b>	Q04724
<b>Localization</b>	Nucleus
<b>Applications</b>	Immunohistochemistry (FFPE) : 1-2ug/ml for 30 min at RT
<b>Limitations</b>	This TLE1 antibody is available for research use only.



IHC staining of FFPE human prostate carcinoma tissue with Transducin-like enhancer protein 1 antibody (clone TLE1/8007R). HIER: boil tissue sections in pH 9 10mM Tris with 1mM EDTA for 20 min and allow to cool before testing.



IHC staining of FFPE human bladder tissue with Transducin-like enhancer protein 1 antibody (clone TLE1/8007R). HIER: boil tissue sections in pH 9 10mM Tris with 1mM EDTA for 20 min and allow to cool before testing.

## Description

Key players in the Notch pathway are the TLE genes, which are human homologs of the *Drosophila* groucho gene. Groucho is a transcriptional repressor that plays a key role in neurogenesis, segmentation and sex determination. Transducin-like enhancer protein1 (TLE1) is a protein that is encoded by the TLE1 gene and is involved in control of hematopoiesis, neuronal, and terminal epithelial differentiation. Positive immunohistochemical nuclear staining with anti-TLE-1 has been shown to be a useful addition to an IHC panel when differentiating synovial sarcoma from other soft tissue malignancies.

## Application Notes

Optimal dilution of the Transducin-like enhancer protein 1 antibody should be determined by the researcher.

## Immunogen

A recombinant human protein fragment (aa 175-338) was used as the immunogen for the Transducin-like enhancer protein 1 antibody.

## Storage

Aliquot the Transducin-like enhancer protein 1 antibody and store frozen at -20oC or colder. Avoid repeated freeze-thaw cycles.