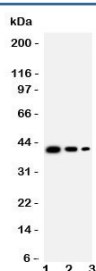


TRAM2 Antibody (R31118)

Catalog No.	Formulation	Size
R31118	0.5mg/ml if reconstituted with 0.2ml sterile DI water	100 ug

Bulk quote request

Availability	1-3 business days
Species Reactivity	Human, Mouse, Rat
Format	Antigen affinity purified
Clonality	Polyclonal (rabbit origin)
Isotype	Rabbit IgG
Purity	Antigen affinity
Buffer	Lyophilized from 1X PBS with 2.5% BSA and 0.025% sodium azide/thimerosal
UniProt	Q924Z5
Applications	Western Blot : 0.5-1ug/ml
Limitations	This TRAM2 antibody is available for research use only.



Western blot testing of TRAM2 antibody; Lane 1: Recombinant mouse protein 10ng; 2: 5ng; 3: 2.5ng

Description

Translocation-Associating Membrane Protein 2, also called KIAA0057, is a protein that in humans is encoded by the TRAM2 gene. It is a component of the translocon, a gated macromolecular channel that controls the posttranslational processing of nascent secretory and membrane proteins at the endoplasmic reticulum(ER) membrane. By genomic sequence analysis, Onuchic et al.(1999) mapped the gene to chromosome 6p21.1-p12 near the PKHD1 gene. Upon activation, quiescent hepatic stellate cells proliferate, change morphologically into myofibroblasts, and increase their synthesis of extracellular matrix proteins. Stefanovic et al.(2004) demonstrated that both TRAM2 and collagen type I are upregulated in activated rat and human hepatic stellate cells.

Application Notes

The stated application concentrations are suggested starting amounts. Titration of the TRAM2 antibody may be required due to differences in protocols and secondary/substrate sensitivity.

Immunogen

An amino acid sequence from the C-terminus of mouse Translocation-Associating Membrane Protein 2 (RFIHSQLRHWREYWKEQ) was used as the immunogen for this TRAM2 antibody (100% rat homology).

Storage

After reconstitution, the TRAM2 antibody can be stored for up to one month at 4°C. For long-term, aliquot and store at -20°C. Avoid repeated freezing and thawing.