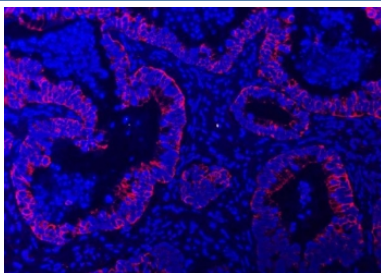


TRAM1L1 Antibody / Translocating chain-associated membrane protein 1-like 1 (RQ7503)

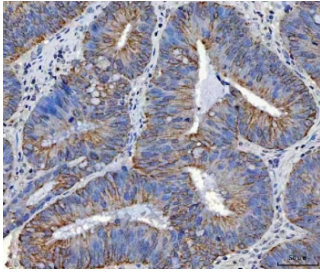
Catalog No.	Formulation	Size
RQ7503	0.5mg/ml if reconstituted with 0.2ml sterile DI water	100 ug

[Bulk quote request](#)

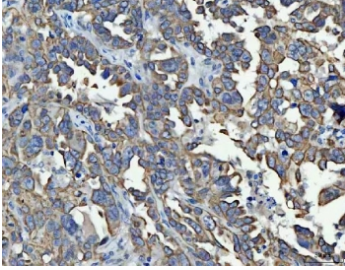
Availability	1-3 business days
Species Reactivity	Human
Format	Antigen affinity purified
Host	Rabbit
Clonality	Polyclonal (rabbit origin)
Isotype	Rabbit IgG
Purity	Antigen affinity purified
Buffer	Lyophilized from 1X PBS with 2% Trehalose
UniProt	Q8N609
Localization	Cytoplasmic (ER)
Applications	Western Blot : 0.5-1ug/ml Immunohistochemistry (FFPE) : 2-5ug/ml Flow Cytometry : 1-3ug/million cells
Limitations	This TRAM1L1 antibody is available for research use only.



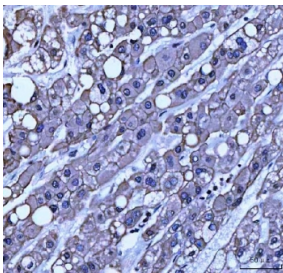
Immunofluorescent staining of FFPE human colorectal adenocarcinoma tissue with TRAM1L1 antibody (red) and DAPI nuclear stain (blue). HIER: steam section in pH8 EDTA buffer for 20 min.



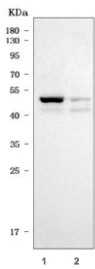
IHC staining of FFPE human colorectal adenocarcinoma tissue with TRAM1L1 antibody. HIER: boil tissue sections in pH8 EDTA for 20 min and allow to cool before testing.



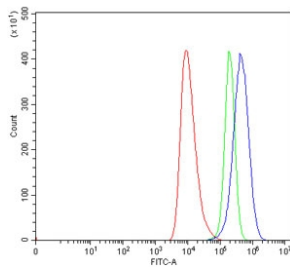
IHC staining of FFPE human ovarian cancer tissue with TRAM1L1 antibody. HIER: boil tissue sections in pH8 EDTA for 20 min and allow to cool before testing.



IHC staining of FFPE human liver cancer tissue with TRAM1L1 antibody. HIER: boil tissue sections in pH8 EDTA for 20 min and allow to cool before testing.



Western blot testing of human 1) T-47D and 2) U-2 OS cell lysate with TRAM1L1 antibody. Predicted molecular weight ~42 kDa.



Flow cytometry testing of human HEL cells with TRAM1L1 antibody at 1ug/million cells (blocked with goat sera); Red=cells alone, Green=isotype control, Blue= TRAM1L1 antibody.

Description

Predicted to be involved in protein insertion into ER membrane. Predicted to be integral component of endoplasmic reticulum membrane.

Application Notes

Optimal dilution of the TRAM1L1 antibody should be determined by the researcher.

Immunogen

Amino acids LQRWVEDSNIQASCMKKK from the human protein were used as the immunogen for the TRAM1L1 antibody.

Storage

After reconstitution, the TRAM1L1 antibody can be stored for up to one month at 4°C. For long-term, aliquot and store at -20°C. Avoid repeated freezing and thawing.