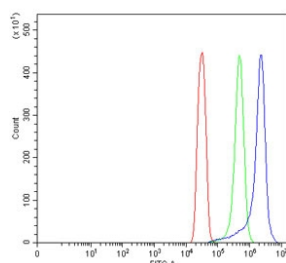


## TRAM1 Antibody / TRAM (RQ7441)

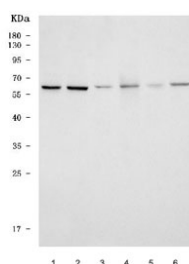
Catalog No.	Formulation	Size
RQ7441	0.5mg/ml if reconstituted with 0.2ml sterile DI water	100 ug

**Bulk quote request**

<b>Availability</b>	1-3 business days
<b>Species Reactivity</b>	Human, Mouse, Rat
<b>Format</b>	Antigen affinity purified
<b>Host</b>	Rabbit
<b>Clonality</b>	Polyclonal (rabbit origin)
<b>Isotype</b>	Rabbit IgG
<b>Purity</b>	Antigen affinity purified
<b>Buffer</b>	Lyophilized from 1X PBS with 2% Trehalose
<b>UniProt</b>	Q15629
<b>Applications</b>	Western Blot : 0.5-1ug/ml Flow Cytometry : 1-3ug/million cells
<b>Limitations</b>	This TRAM1 antibody is available for research use only.



Flow cytometry testing of human SiHa cells with TRAM1 antibody at 1ug/million cells (blocked with goat sera); Red=cells alone, Green=isotype control, Blue= TRAM1 antibody.



Western blot testing of 1) human HeLa, 2) human Jurkat, 3) human PC-3, 4) rat testis, 5) rat liver and 6) mouse testis tissue lysate with TRAM1 antibody. Predicted molecular weight ~43 kDa but may be observed at higher molecular weights due to glycosylation.

## Description

Sequence analysis predicted that human TRAM1 (Translocation-Associating Membrane Protein 1) is a 374-amino acid, 8-pass transmembrane protein that shares 95% amino acid identity with the canine protein. Functional analysis indicated that TRAM1 influences glycosylation and is stimulatory or required for the translocation of secretory proteins.

## Application Notes

Optimal dilution of the TRAM1 antibody should be determined by the researcher.

## Immunogen

Amino acids QLRRWREHSFQAPAVKKK from the human protein were used as the immunogen for the TRAM1 antibody.

## Storage

After reconstitution, the TRAM1 antibody can be stored for up to one month at 4°C. For long-term, aliquot and store at -20°C. Avoid repeated freezing and thawing.