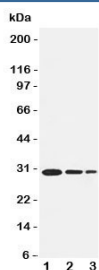


TRAF1 Antibody (R31113)

Catalog No.	Formulation	Size
R31113	0.5mg/ml if reconstituted with 0.2ml sterile DI water	100 ug

[Bulk quote request](#)

Availability	1-3 business days
Species Reactivity	Human, Mouse
Format	Antigen affinity purified
Host	Rabbit
Clonality	Polyclonal (rabbit origin)
Isotype	Rabbit IgG
Purity	Antigen affinity
Buffer	Lyophilized from 1X PBS with 2.5% BSA and 0.025% sodium azide/thimerosal
UniProt	Q13077
Applications	Western Blot : 0.5-1ug/ml
Limitations	This TRAF1 antibody is available for research use only.



Western blot testing of TRAF1 antibody and recombinant human protein, 30.6KD with tag; Lane 1: 5ng; 2: 2.5ng; 3: 1.25ng

Description

TNF Receptor-Associated Factor 1, also called EBI6, is a protein that in humans is encoded by the TRAF1 gene. The protein encoded by this gene is a member of the TNF receptor (TNFR) associated factor (TRAF) protein family. Sieminski et al.(1997) used fluorescence in situ hybridization to map the gene to 9q33-q34. Mosialos et al.(1995) found that LMP1, the EBV-transforming protein, specifically associates with LAP1 (TRAF3) or TRAF1 in B lymphoblasts. LMP1 expression redirects LAP1 and TRAF1 from scattered cytoplasmic structures to LMP1 plasma membrane patches. Both LAP1 and TRAF1 associated with the cytoplasmic domain of p80/TNFR2 in vivo.

Application Notes

The stated application concentrations are suggested starting amounts. Titration of the TRAF1 antibody may be required due to differences in protocols and secondary/substrate sensitivity.

Immunogen

An amino acid sequence from the middle region of human TNF Receptor-Associated Factor 1 (HSQLDRERILSLEQR) was used as the immunogen for this TRAF1 antibody.

Storage

After reconstitution, the TRAF1 antibody can be stored for up to one month at 4°C. For long-term, aliquot and store at -20°C. Avoid repeated freezing and thawing.